

**EXTENDING PALEOZOIC GAS PLAYS EASTWARD:
A RECONNAISSANCE MULTICHANNEL SEISMIC SURVEY
OF SENECA, CAYUGA AND ONEIDA LAKES**

Final Report

Prepared for

**THE NEW YORK STATE
ENERGY RESEARCH DEVELOPMENT AUTHORITY**
Albany, NY

John P. Martin
Project Manager

Prepared by

Christopher A. Scholz, Ph.D.
Department of Earth Sciences
Syracuse University
Syracuse, New York, 13244

Notice

This report was prepared by Christopher A. Scholz in the course of performing work contracted for and sponsored by the New York State Energy Research Development Authority (hereafter “NYSERDA”). The opinions expressed in this report do not necessarily reflect those of NYSERDA or New York State, and reference to any specific product, service, process, or method does not constitute an implied or expressed recommendation or endorsement of it. Further NYSERDA, the State of New York, and the contractor make no warranties or representations, expressed or implied, as to the fitness for particular purpose or merchantability of any product, apparatus, or service, or the usefulness, completeness, or accuracy of any process, methods, or other information contained, described, disclosed, or referred to in this report. NYSERDA, the State of New York, and the contractor make no representations that the use of any product, apparatus, process, or method, or other information will not infringe privately owned rights and will assume no liability for any loss, injury or damage resulting from, or occurring in connection with, the use of information contained, described, disclosed, or referred to in this report.

Abstract

In October 2002 Syracuse University chartered the R/V William Scandling from Hobart William Smith Colleges for a two week period, to conduct a multichannel seismic reflection survey of Seneca and Cayuga Lakes. Originally the project also intended to survey Oneida Lake, but because of limited vessel availability, operational issues with seismic source equipment, and logistical constraints involving the canal transit, it was not possible to include Oneida Lake during this program.

The survey acquisition parameters were as follows:

- Seismic Source: 2 x 40 cubic inch sleeve gun source array, powered by 2 diesel-driven air compressors
- Seismic Receiving array: ITI 48-channel, 600 m active-section, solid, towed-hydrophone array
- Recording System: 24-bit OYO DAS-1 recording system
- Vessel Navigation: Differential GPS

Because of the narrow widths (generally <1 km) and steep sub-lake valley walls of the two large Finger Lake basins, lines were oriented along-axis only. Following parameter and equipment testing and shakedown, two overlapping lines were each acquired on Seneca and Cayuga Lakes.

Seismic data processing was completed by Sterling Seismic Services Ltd., of Littleton CO., and beyond standard routines involved 1) establishing the crooked line geometry, 2) application of a high-resolution radon demultiple routine, 3) Kirckoff migration, 4)FK filter.

Seismic quality in the dataset is highly variable, with excellent imagery of the Quaternary section and the Quaternary-Paleozoic bedrock interface. In the upper part of the bedrock

section, good images were recovered of the Onondaga and Lockport formations, but Precambrian basement was not observed continuously along the four profiles acquired.

Key words: Finger Lakes; Seneca Lake, Cayuga Lake, Seismic Reflection Data, Appalachian Basin

Acknowledgements

We express our gratitude to the Captain and Crew of the R/V William Scandling for their persistent efforts in aiding data acquisition, and to Sterling Seismic Services for extending their expertise to the post-cruise processing of the data.

TABLE OF CONTENTS

Section

1	INTRODUCTION	1-1
2	GEOLOGICAL BACKGROUND.....	2-1
3	DATA ACQUISITION.....	3-1
	Research Vessel	3-2
	Seismic Source System	3-2
	Seismic Hydrophone Streamer	3-3
	Navigation.....	3-3
	Acquisition Procedures	3-3
4	DATA PROCESSING	4-1
	Brute Stack.....	4-2
5	SEISMIC INTERPRETATION.....	5-1
	Stratigraphic Features	5-1
	Quaternary Fill	5-1
	Onondaga Limestone	5-2
	Lockport Formation	5-3
	Other Stratigraphic and Structural Observations	5-3
	APPENDIX A (data disk) Raw and Processed Seismic Data.....	attached
	APPENDIX B Navigation Data.....	A-1
	APPENDIX C Seismic Trackline Map.....	B-1

FIGURES

Figure

1	R/V William Scandling.....	3-1
2	Seismic Airgun Array.....	3-2
3	Vessel Deck Layout with Streamer and Compressor.....	3-3
4	Seismic Tracklines.....	3-4
5	Brute Stack.....	4-2
6	Stack with Kirchhoff Migration.....	4-3
7	Stack with Kirchhoff Migration + FK Filtering.....	4-3
8	Late-Quaternary Sedimentary Section.....	5-1
9	Detailed Image of the Onondaga Limestone Reflections.....	5-2
10	Detailed Image of the Lockport formation Reflections.....	5-2
11	North Seneca Seismic Line.....	5-4
12	South Seneca Seismic Line.....	5-5
13	North Cayuga Seismic Line.....	5-6
14	South Cayuga Seismic Line.....	5-7

INTRODUCTION

The level of oil and gas exploration activity in New York State is now significantly heightened, due to the combination of increased prices for natural gas nationwide over the past several years, the numerous successful wildcat drilling efforts targeting the Trenton/Black River Formations, and the emergence of new technologies for gas storage and transport. The Trenton/Black River play has proven that high production rates and large reserves are possible in central and southern New York State, which lies in close proximity to huge markets of the northeastern U.S. Numerous new wells are located along the southern tier and in Steuben, Schuyler and Chemung Counties especially. The aim of this research is provide a public domain geophysical data set that will help companies identify prospects both to the north and east of the main producing areas.

Trenton/Black River and many other prospects are primarily identified using seismic reflection data, which is routinely collected by private contractors along roadways imaging individual, intersecting profiles. The standard energy source used to produce these images consists either of dynamite or Vibroseis technology, which employs an array of specialized vibrating trucks. Such acquisition techniques commonly yield excellent subsurface images, yet the cost of acquiring these data is very high. Furthermore, the data is confidential and is sold to exploration companies, and almost always held out of the public domain following acquisition. Recently, 3-D seismic acquisition has been underway in New York State, which provides an even better opportunity to selectively target narrow intervals, albeit at an even higher initial cost.

This project used two-dimensional marine seismic methods to image the subsurface under Cayuga and Seneca Lakes. Marine methods are typically much less expensive than land data on a per-kilometer basis, although initial start-up, or mobilization costs are also typically quite high.

GEOLOGICAL BACKGROUND

The regional geology of the Appalachian Basin in New York State and major stratigraphic trends of the productive Trenton-Black River Formations is well-described (e.g. Robinson, 1985). In this study area the stratigraphic section consists of up to several thousand meters of Paleozoic siliciclastic and carbonate sequences that dip and thicken to the south. Commercial land seismic surveys generally acquire data on the high plateaus between the Finger Lakes. However this project conducted an imaging experiment through bottom of the deeply incised bedrock valleys of the two largest Finger Lakes, which have previously been characterized only through very shallow, high-resolution seismic reflection methods. Accordingly, the true bedrock relief within these valleys has been only estimated in the past.

DATA ACQUISITION

The seismic reflection method involves imparting a percussive or acoustic source signal into the subsurface, and then collecting signals that are reflected off sedimentary layer interfaces using either geophones (during land surveys) or hydrophones (in case of marine surveys). Geophones measure ground acceleration due to the faint, returning seismic signals, whereas hydrophones measure pressure pulses passing through the water column. In the marine case, data are collected in analog form at the sensors, then converted to digital signals either within the hydrophone cable or onboard the seismic vessel.

Marine seismic acquisition can be much more cost-effective than land acquisition, and the resulting images are often of higher-fidelity than land-based data. The Department of Earth Sciences at Syracuse University operates systems for acquisition, processing, and interpretation of high-quality marine-type seismic reflection data from freshwater lake basins.

The offshore seismic industry achieves tremendous economies of scale collecting high-fidelity seismic reflection data using large specialized vessels, commonly equipped with multiple hydrophone streamers and multiple air gun source arrays. Lake surveys in landlocked systems or lakes accessible by modest-sized vessels require systems that are portable, compact, and modular, in order to fit on existing vessels. Whereas many operators have demonstrated the ability to tow relatively long streamers behind small vessels, the major limiting factor in the efficacy of small vessel seismic operations is the size of the air compressor bank that can be accommodated on the vessel.

The rule of thumb for achieving adequate depth of penetration with a given survey, is to deploy an array of receivers that is nearly as long as the maximum



Figure 1. R/V William Scandling

target depth. Typical hydrophone cable lengths in the offshore industry range from 3000 m to 6000 m or more. Such cable lengths are impossible to safely deploy and operate within narrow basins such as Seneca and Cayuga lakes, and thus lake surveys such as this one are typically compromised by a shorter receiving array effort.

RESEARCH VESSEL

The project chartered the R/V William Scandling for the seismic survey work. The Scandling is a 60' steel-hull, single-screw research vessel available for educational and research studies on the Finger Lakes. The vessel is operated by Hobart William Smith Colleges, and is based out of Geneva NY, on Seneca Lake. The vessel has a large dry laboratory for electronic acquisition equipment, and considerable outdoor deck area for deployment of scientific deck gear (e.g. compressors and seismic winch). A 1-ton crane aboard the vessel was used for deploying the deck gear, and the vessel is operated by a professional Captain and crew.

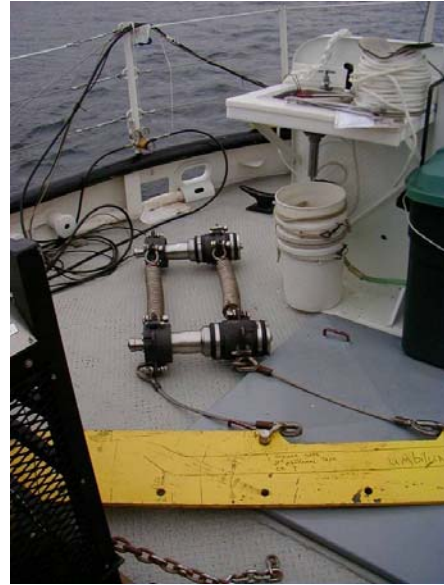


Figure 2. Two-airgun seismic array.

SEISMIC SOURCE SYSTEM

Two diesel-driven seismic air compressors were mounted aboard the deck of the William Scandling in order to provide high pressure (2000) PSI air to the airgun array, which is the device used for generating a controlled pneumatic explosion in the water column, every 20 seconds along the transect. The airgun array consisted of two 40 cubic inch GSI sleeve gins, suspended vertically, and centered in the water at 2 m depth. The limited deck area of the vessel constrained the size of the air compressors that could be deployed, and accordingly, one constraint the project faced was delivering sufficient high-pressure

air to the array to consistently maintain 2000 PSI airgun pressure along the acquired profiles.

SEISMIC HYDROPHONE STREAMER

Standard hydrophone cables or “streamers” contain wiring and electronics within a plastic jacket, and the jacket is then filled with a lightweight oil to assist in balancing or buoying the cable. Because of the environmental sensitivity of the freshwater lakes of Central New York, we elected to instead use a solid hydrophone streamer that contains no oil or other possible contaminants. The cable employed was an ITI StealthArray, with a 600 m active length, and 48 channels. The maximum offset from the gun array to the center of the last hydrophone channel was 644 m. Digicourse Birds were deployed at set distances along the cable to facilitate streamer leveling.

NAVIGATION

An active navigational system was used to control the firing of the gun array, and used a Trimble differential GPS system as the basis for positioning. Data points were continuously acquired at 1 second intervals during the acquisition of each profile.



Figure 3. Seismic streamer on reel on aft deck.

ACQUISITION PROCEDURES

Data was acquired and digitally recorded using an OYO-DAS-1 recording system and the 24-bit data was recorded on 8 mm tape. Because of the air delivery limitation, shots were fired every 25 m, yielding 12-fold acquisition.

The R/V William Scandling only operates in daylight, and accordingly seismic acquisition was restricted to daylight hours. Because the only time the vessel was available for the cruise was in mid-October, the daylight operations were limited to ~10.5

hours/day, which hampered production considerably. Navigational hazards were a concern during acquisition of several lines, as we had to approach the moored Naval acoustics platform on Seneca Lake, as well as other obstacles.

Because of issues of obstacle avoidance, including recreational boaters, there were several instances when streamer fairing was high, and thus crooked-line processing was necessarily invoked during the processing stage of the project. Shooting speeds were relatively slow because of the limited air compressor supply, and were generally in the range of 2-3 knots. At such slow speeds the streamer levelers worked marginally, and we observed periodic dips in the streamer.



Figure 4. Four seismic tracklines on Seneca and Cayuga lakes (see Appendix also).

The overall rate of progress of the survey work during the ~week-long cruise was much slower than anticipated, due to the combined effects of limited daylight, limited working hours per day, and slow shooting speeds. One great advantage of most marine surveys is the ability to work continuously, throughout the night, using multiple crews or watches. Most equipment problems tend to develop during the actual deployment phase of the effort, when streamers or air gun arrays are being placed into the water or recovered at the end of operations. Deployment and recovery is also the most time-consuming and potentially dangerous aspect of the operation. This project was therefore doubly disadvantaged because the streamer and airgun had to be recovered and deployed in daylight, which generally consumed ~1.5 hours at the start and end of each day. Because of these limitations it was not possible to shoot an entire lake in a single day. Because of the slow rate of acquisition, the project consumed all of the fixed amount of available ship time while on Seneca and Cayuga Lakes, before the ship could transit to Oneida Lake. Accordingly the project acquired complete surveys of Seneca and Cayuga Lakes, but no data from Oneida Lake.

DATA PROCESSING

Following data acquisition, initial data processing was conducted by Syracuse University. The first results proved disappointing, due to complex line geometries and the challenging imaging environment. In this project the principal imaging difficulties were posed by 1) the radical topography of the narrow deeply-incised valleys, and 2) the marked contrast in lithology and seismic velocity between the late-Quaternary unconsolidated glaciolacustrine sediments and the Paleozoic shale and carbonate sequences of the Appalachian Basin. Seismic velocities in the water column and in the Quaternary sediments are typically in the range of 1500 m/sec, whereas the seismic velocity of the underlying bedrock can be 4500 m/sec or more. The observed interface between the bedrock and Quaternary sediments displays considerable relief along each of the two lakes studied, further complicating data processing. The bedrock ‘thalweg’ of the V-shaped valleys is not necessarily centered within the basin, but appears to shift side-to-side along the lake’s axis. Accordingly there were numerous instances when the seismic array was not aligned over the thalweg, but instead was positioned over one of the margins of the bedrock basin, producing an “apparent topography” along the strike profiles. All these conditions led to enhanced levels of coherent noise in the data, primarily in the form of multiples off of the top-bedrock surface, but also from side-swipe events.

Following initial processing at Syracuse University, Sterling Seismic Services, Inc., of Littleton, CO, focused on developing a series of routines for suppressing multiple energy and enhancing the primary arrivals. Examples of the data that were conditioned following each of these steps are presented in the following sections.

BRUTE STACK

Initial stacking was completed with a limited number of velocity analyses and no attempts at multiple suppression. Here the late-Quaternary section and the top-Bedrock surface are very clear, but a series of ringing events trails below the primary reflections.

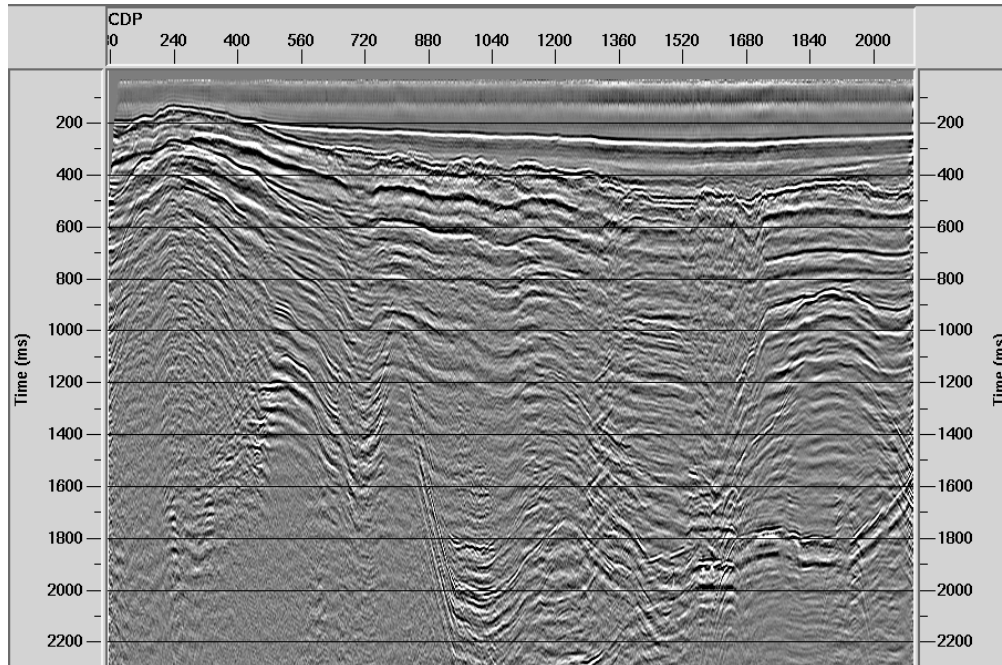


Figure 5. Brute stack using limited velocity picks and no multiple suppression.

Whereas it appears that there is some apparent structure within the profile, it is very difficult to determine what is true bedrock deformational fabric, and what is acquisition artifact.

Routines attempted by Sterling Seismic Services are shown on the following page.

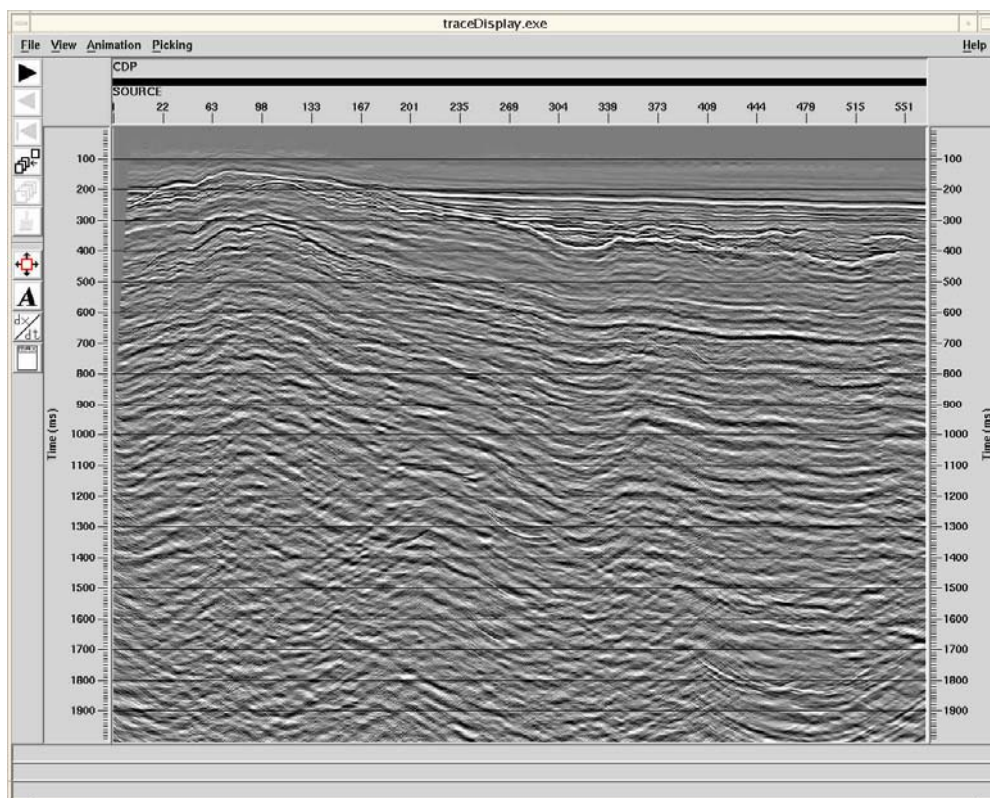


Figure 6. Kirchhoff Migration

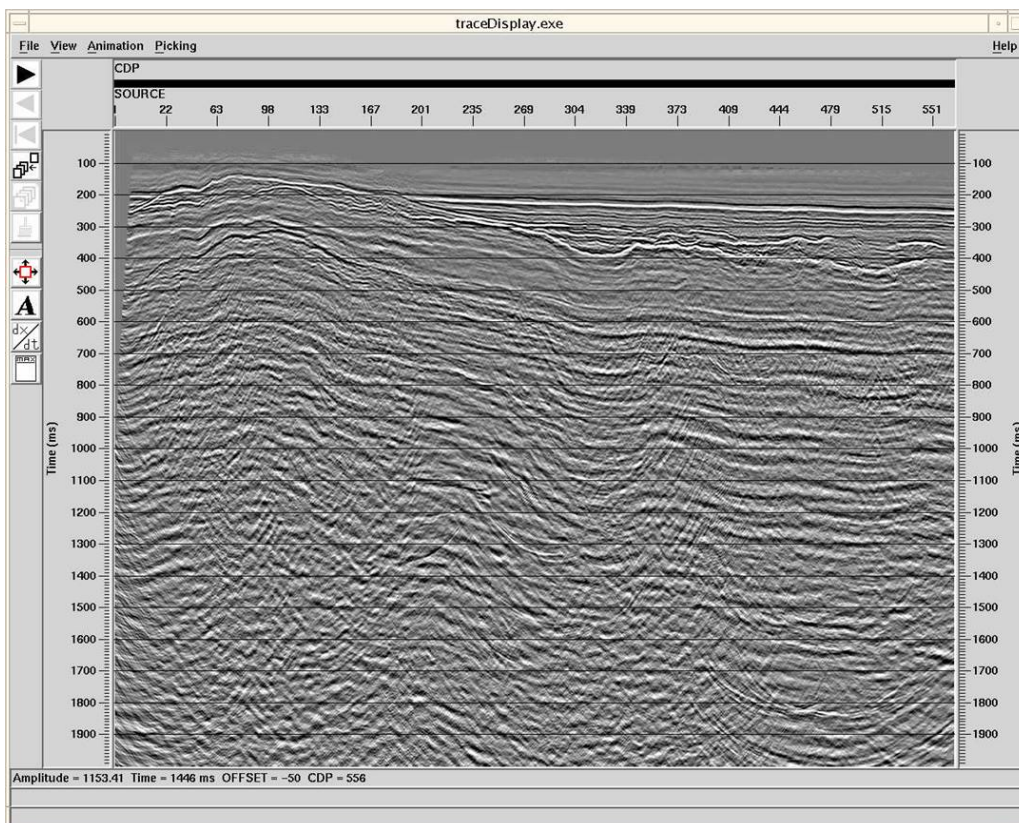


Figure 7. Kirchhoff Migration plus FK Filtering

SEISMIC INTERPRETATION

Additional seismic data processing by Sterling Seismic Services significantly improved the character of the seismic images acquired on Seneca and Cayuga Lakes. Ringing and primary multiples were suppressed, and although a full Paleozoic section with clear basement is not observed in these data, a useful variety of stratigraphic and structural features are detectable, and provide new information on the subsurface of these lake basins. Below we discuss some of the salient observations, and then present the images of the final processed lines.

STRATIGRAPHIC FEATURES

Quaternary Fill

All of the profiles acquired contain exceptionally clear images of the late-Quaternary glacio-lacustrine fill in both Seneca and Cayuga Lakes. Within this part of the section

we observe three discrete seismic facies: 1) a thin, upper moderate frequency and relatively low amplitude unit that probably corresponds to Holocene sediments of the modern lakes; a

highly reflective, continuous facies

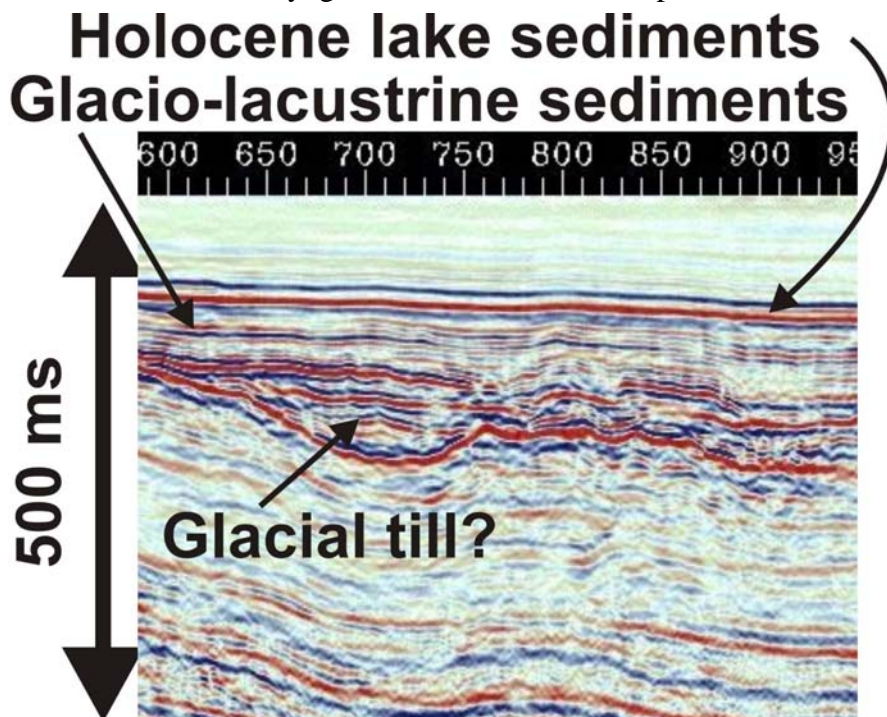


Figure 8. Section from upper part of North Seneca line, illustrating Quaternary sediments.

unit interpreted to correlate to the late-Glacial-lacustrine sediments known to have accumulated during pro-glacial lake stages of the basin; and 3) a wavy-discontinuous, variable amplitude facies that may correspond to basal glacial till or outwash sediments.

Onondaga Limestone

The general along-axis dip of the lakefloor of both Seneca and Cayuga Lakes is on the order

of 2°-3°, which is slightly more than the regional dip of the Paleozoic bedrock of central New York. A very high amplitude reflection that marks the top of the bedrock surface at the southern ends of both Cayuga and Seneca lakes is likely the top of the Onondaga Limestone, which is known from commercial seismic reflection records to be a pronounced and easily traceable event. The observed high-amplitude reflection extends for a distance of approximately 12 km along the southernmost part of the South Seneca seismic reflection profile.

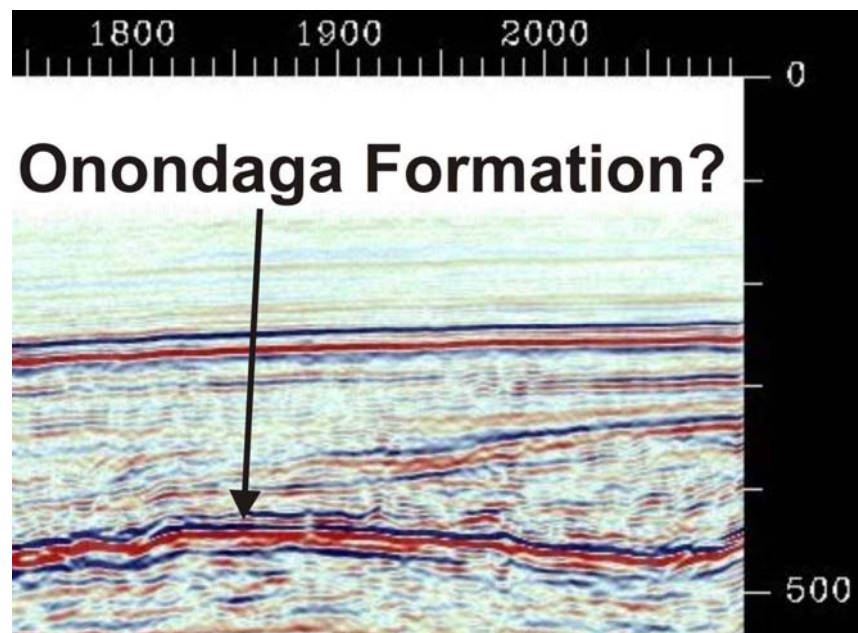


Figure 4. part of South Seneca profile illustrating section interpreted as top of Onondaga Limestone.

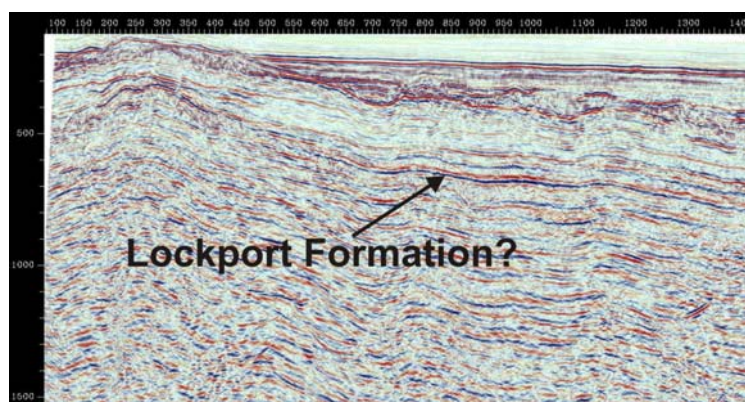


Figure 10. North Seneca profile indicating interpreted top of Lockport formation.

Lockport Formation

The deepest continuous reflections observed on these data are located on the North Seneca profile. Between shot points 500 and 1600 we observe a series of south-dipping continuous reflections, between depths of 350 and 700 ms, two-way travel time. The reflection patterns suggest that these are in indeed primary arrivals from the Paleozoic section. The highest amplitude event observed extends from a subbottom depth of ~550 ms to a depth of 700 ms in the center part of the lake. Based on comparisons to regional structure maps, and to examples of regional commercial seismic data from the area, the most likely candidate for producing such a high-amplitude event is the Lockport Formation. This middle-Silurian age dolomite is bracketed by shale and anhydrite, and produces a set of strong reflections in most seismic reflection data. Moreover the events observed on the North Seneca profile are projected at a depth of ~750-900 m below sea level in this area, which is the approximate depth of the Lockport in regional wells close to the lake.

Other Stratigraphic and Structural Observations

A variety of south-dipping reflections are observed throughout the four seismic profiles on the two lakes. Surprisingly, there are no clear-cut candidates for Paleozoic basement observed in these data. Basement should be observed between ~1.1 and 1.5 seconds two-way travel time, and whereas there are occasionally bright events, we are unable, with any degree of certainty, to interpret these as the base of the Paleozoic section. The relatively poor images from the deeper part of the Paleozoic section are attributed to several causes, but chief among them is the limited length of the receiving array (~600 m) and the relatively small output of the air gun seismic source.

Several interesting apparent fracture systems crosscut Seneca and Cayuga Lakes, and may play a role in terminating observed reflections. Additionally some fractures are observed to propagate up into the late-Quaternary section, and may be tied to fracture systems mapped via remote sensing, or observable in outcrop. Full profiles are presented in the following pages.

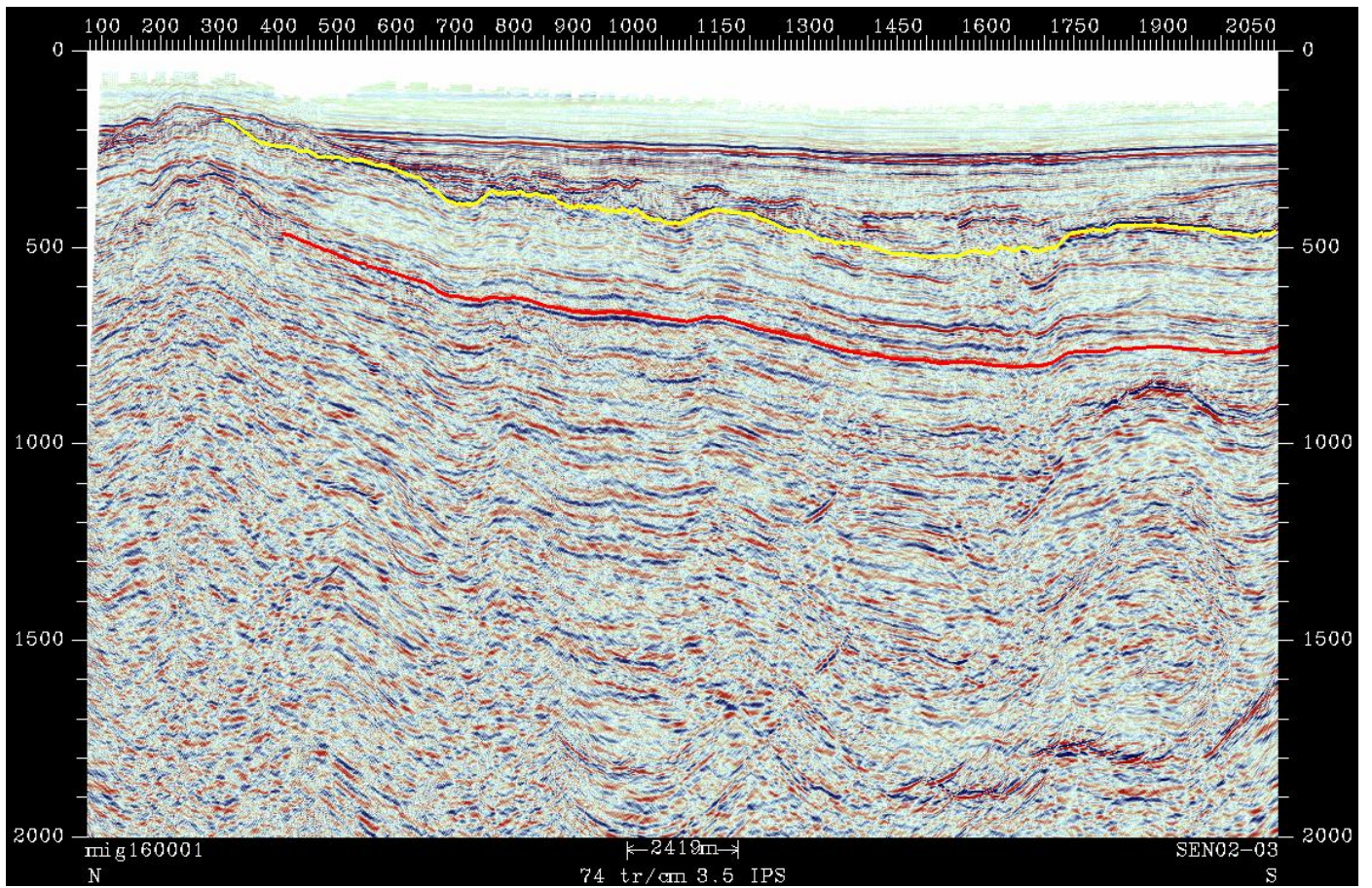


Figure 5. North Seneca profile, with top bedrock (yellow) and interpreted top Lockport Formation.

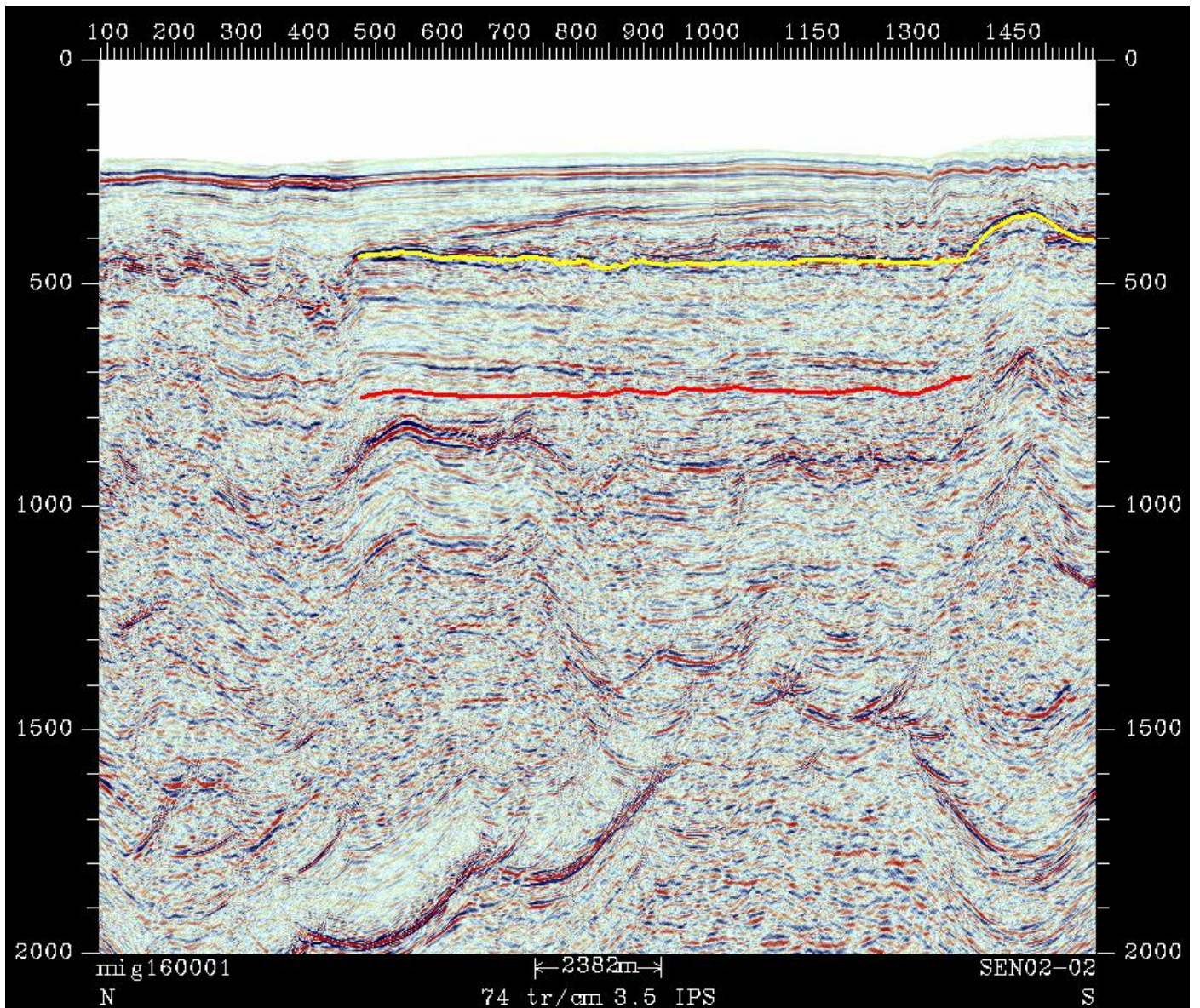


Figure 6. South Seneca Profile with top bedrock and top Lockport (red) identified.

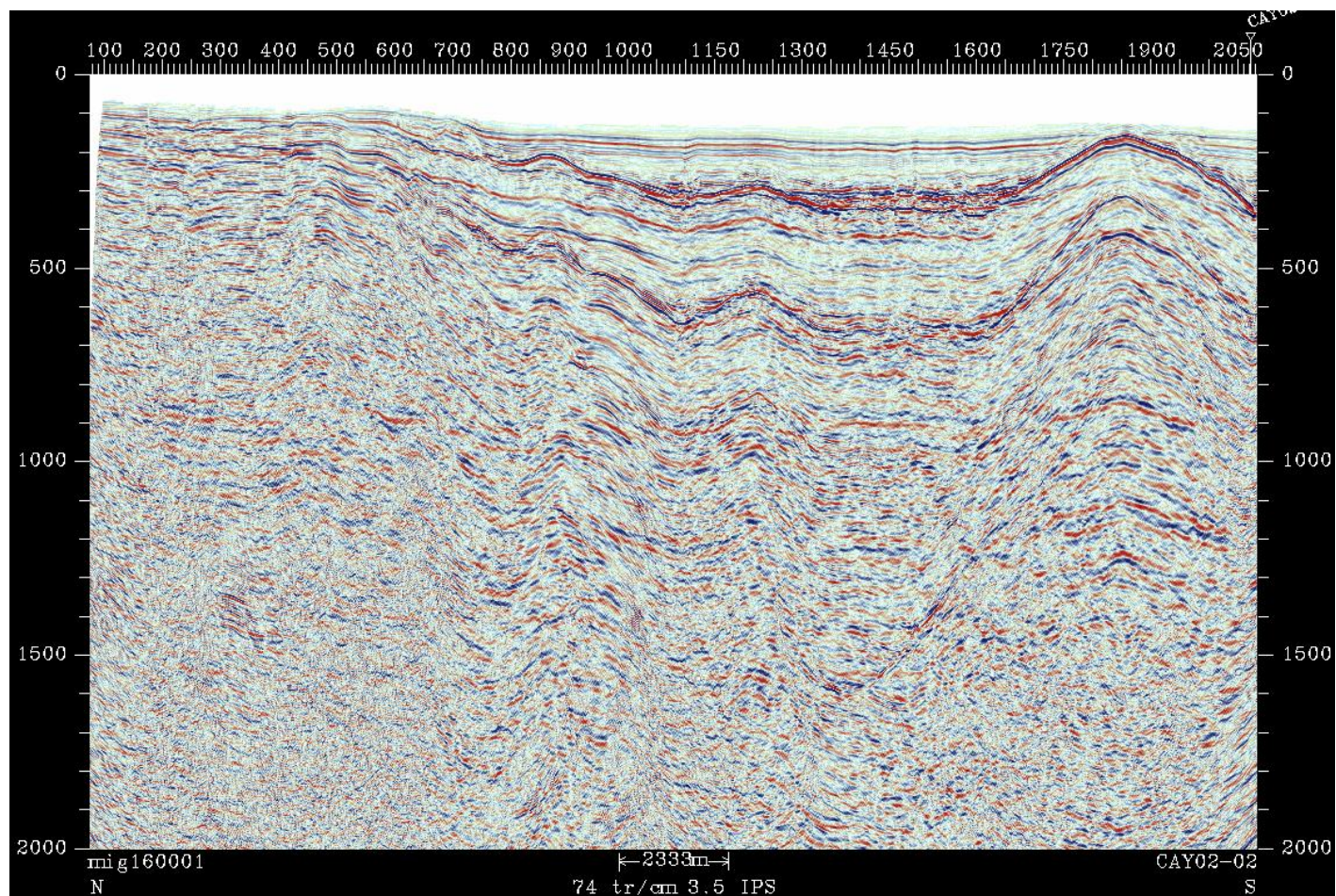


Figure 7. North Cayuga profile.

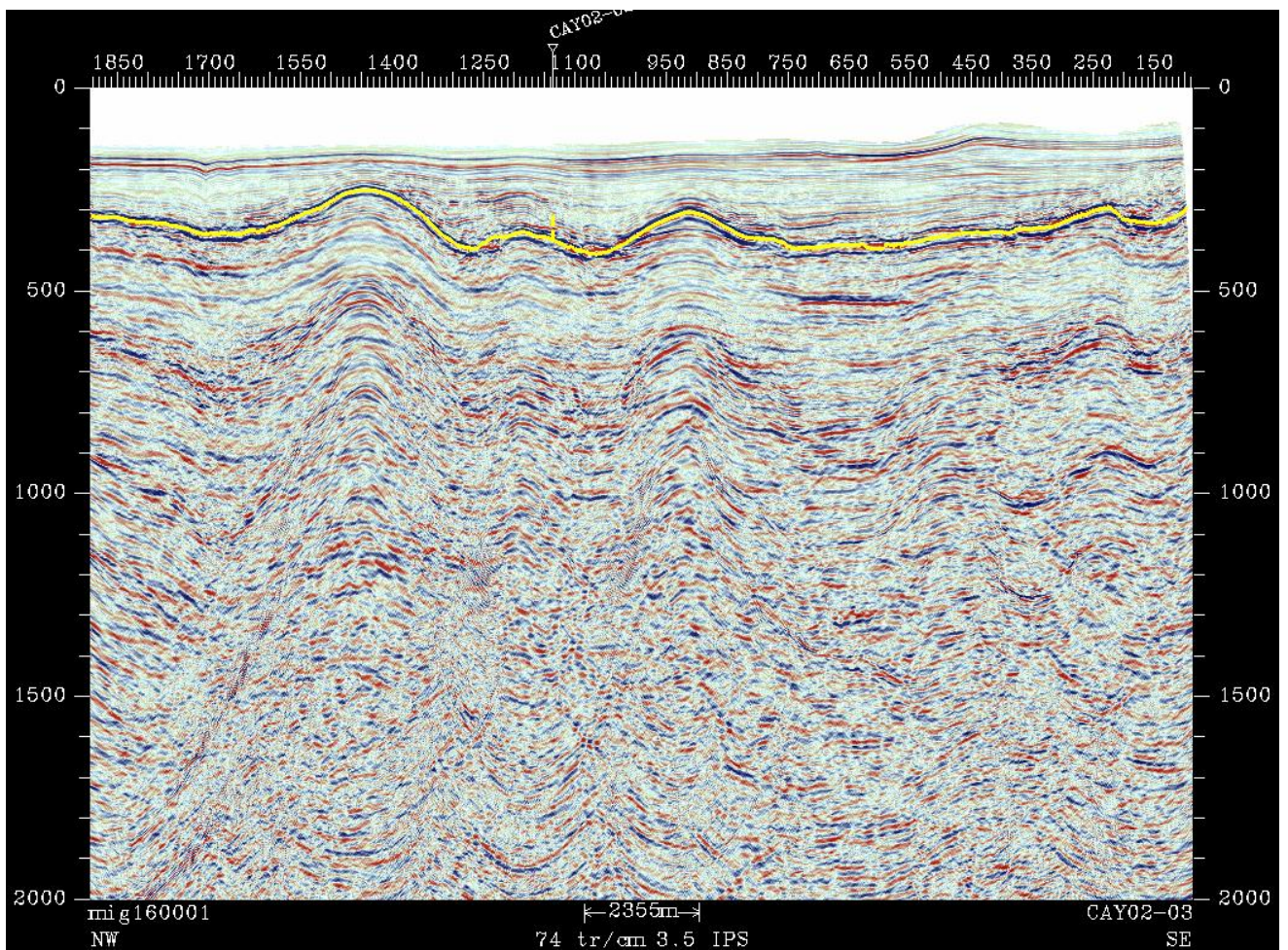


Figure 8. South Cayuga profile.

REFERENCES

Robinson, J.E., Development of gas-bearing reservoirs in the Trenton Limestone Formation of New York., NYSERDA Final Report 85-18.

Appendix B
Navigation Data

Cayuga2			Cayuga3			Seneca2			Seneca3		
Shot	LONGITUDE	LATITUDE	Shot	LONGITUDE	LATITUDE	Shot	LONGITUDE	LATITUDE	Shot	LONGITUDE	LATITUDE
1	-76.743003	42.789286	1	-76.527119	42.497919	1	-76.896333	42.603161	1	-76.941611	42.747715
2	-76.742977	42.789188	2	-76.527158	42.497998	2	-76.896358	42.602933	2	-76.941579	42.747633
3	-76.742961	42.789098	3	-76.527197	42.498077	3	-76.896377	42.602711	3	-76.941549	42.747551
4	-76.742937	42.789000	4	-76.527234	42.498157	4	-76.896425	42.602475	4	-76.941520	42.747468
5	-76.742914	42.788902	5	-76.527270	42.498236	5	-76.896487	42.602255	5	-76.941490	42.747386
6	-76.742891	42.788804	6	-76.527304	42.498317	6	-76.896509	42.602040	6	-76.941461	42.747304
7	-76.742868	42.788705	7	-76.527389	42.498537	7	-76.896498	42.601822	7	-76.941430	42.747222
8	-76.742845	42.788607	8	-76.527463	42.498758	8	-76.896501	42.601611	8	-76.941397	42.747140
9	-76.742785	42.788369	9	-76.527530	42.498967	9	-76.896520	42.601401	9	-76.941303	42.746932
16	-76.742391	42.786795	10	-76.527612	42.499185	10	-76.896544	42.601184	10	-76.941205	42.746711
17	-76.742366	42.786697	11	-76.527703	42.499403	11	-76.896521	42.600969	11	-76.941120	42.746502
38	-76.741210	42.781849	12	-76.527792	42.499610	12	-76.896522	42.600739	12	-76.941028	42.746281
39	-76.741183	42.781707	13	-76.527889	42.499825	13	-76.896507	42.600518	13	-76.940944	42.746070
55	-76.740572	42.778002	14	-76.527988	42.500039	14	-76.896563	42.600306	14	-76.940865	42.745860
56	-76.740563	42.777776	15	-76.528091	42.500251	15	-76.896624	42.600079	15	-76.940794	42.745648
57	-76.740548	42.777551	16	-76.528201	42.500447	16	-76.896635	42.600035	16	-76.940712	42.745430
58	-76.740521	42.777327	17	-76.528308	42.500656	17	-76.896649	42.599981	17	-76.940636	42.745219
59	-76.740476	42.777103	18	-76.528417	42.500863	18	-76.896666	42.599916	18	-76.940567	42.745006
60	-76.740418	42.776881	19	-76.528532	42.501056	19	-76.896686	42.599838	19	-76.940495	42.744780
61	-76.740358	42.776658	20	-76.528665	42.501256	20	-76.896706	42.599750	20	-76.940434	42.744564
62	-76.740296	42.776436	21	-76.528798	42.501458	21	-76.896732	42.599651	21	-76.940368	42.744339
63	-76.740243	42.776212	22	-76.528919	42.501663	22	-76.896759	42.599545	22	-76.940286	42.744117
64	-76.740211	42.775976	23	-76.529032	42.501869	23	-76.896785	42.599413	23	-76.940199	42.743906
65	-76.740167	42.775757	24	-76.529147	42.502064	24	-76.896805	42.599279	24	-76.940114	42.743681
66	-76.740129	42.775551	25	-76.529277	42.502270	25	-76.896826	42.599136	25	-76.940044	42.743467
67	-76.740102	42.775358	26	-76.529412	42.502475	26	-76.896853	42.598974	26	-76.939981	42.743240
68	-76.740082	42.775183	27	-76.529544	42.502682	27	-76.896868	42.598817	28	-76.939873	42.742801
69	-76.740061	42.775000	28	-76.529673	42.502891	28	-76.896883	42.598651	29	-76.939799	42.742590
70	-76.740043	42.774819	29	-76.529799	42.503099	29	-76.896919	42.598474	30	-76.939698	42.742372
71	-76.740027	42.774638	30	-76.529924	42.503308	30	-76.897024	42.598294	31	-76.939609	42.742166
72	-76.740012	42.774458	31	-76.530049	42.503517	31	-76.897126	42.598126	32	-76.939514	42.741946
73	-76.739996	42.774279	32	-76.530178	42.503726	32	-76.897171	42.597931	33	-76.939428	42.741736
74	-76.739975	42.774090	33	-76.530304	42.503937	33	-76.897183	42.597745	34	-76.939353	42.741510
75	-76.739953	42.773912	34	-76.530425	42.504149	34	-76.897198	42.597546	35	-76.939288	42.741295
76	-76.739927	42.773724	35	-76.530548	42.504359	35	-76.897247	42.597351	36	-76.939221	42.741069
77	-76.739899	42.773536	36	-76.530675	42.504556	36	-76.897291	42.597147	37	-76.939143	42.740858
78	-76.739871	42.773348	37	-76.530802	42.504766	37	-76.897337	42.596953	38	-76.939057	42.740636
79	-76.739837	42.773150	38	-76.530917	42.504979	38	-76.897394	42.596740	39	-76.938990	42.740425
80	-76.739796	42.772954	39	-76.531040	42.505190	39	-76.897450	42.596514	40	-76.938909	42.740203
81	-76.739754	42.772757	40	-76.531166	42.505401	40	-76.897484	42.596291	41	-76.938825	42.739993
82	-76.739711	42.772561	41	-76.531283	42.505602	41	-76.897506	42.596076	42	-76.938744	42.739771
83	-76.739667	42.772366	42	-76.531404	42.505813	42	-76.897554	42.595873	43	-76.938676	42.739557
84	-76.739619	42.772160	43	-76.531519	42.506024	43	-76.897626	42.595671	44	-76.938607	42.739332
85	-76.739570	42.771954	44	-76.531625	42.506225	44	-76.897657	42.595459	45	-76.938535	42.739124
86	-76.739520	42.771750	45	-76.531737	42.506436	45	-76.897669	42.595258	46	-76.938460	42.738896
87	-76.739473	42.771545	46	-76.531855	42.506646	46	-76.897665	42.595046	47	-76.938386	42.738684
88	-76.739425	42.771342	47	-76.531967	42.506843	47	-76.897674	42.594850	48	-76.938318	42.738459
89	-76.739373	42.771140	48	-76.532085	42.507051	48	-76.897688	42.594638	49	-76.938252	42.738247
90	-76.739322	42.770937	49	-76.532198	42.507261	49	-76.897683	42.594437	50	-76.938175	42.738025
91	-76.739265	42.770724	50	-76.532299	42.507461	50	-76.897704	42.594220	51	-76.938102	42.737813
92	-76.739209	42.770522	51	-76.532405	42.507672	51	-76.897725	42.594007	52	-76.938028	42.737589
93	-76.739155	42.770309	52	-76.532523	42.507882	52	-76.897720	42.593794	53	-76.937952	42.737381
94	-76.739104	42.770096	53	-76.532639	42.508091	53	-76.897728	42.593545	54	-76.937879	42.737154
95	-76.739055	42.769894	54	-76.532750	42.508287	54	-76.897728	42.593285	55	-76.937815	42.736941
96	-76.739001	42.769683	55	-76.532869	42.508494	55	-76.897706	42.593023	56	-76.937750	42.736716
97	-76.738951	42.769472	56	-76.532978	42.508703	56	-76.897686	42.592768	57	-76.937687	42.736503

98	-76.738903	42.769260	57	-76.533086	42.508912	57	-76.897698	42.592499	58	-76.937627	42.736278
99	-76.738849	42.769037	58	-76.533195	42.509110	58	-76.897694	42.592231	59	-76.937615	42.736230
100	-76.738795	42.768824	59	-76.533310	42.509318	59	-76.897692	42.591965	60	-76.937600	42.736171
101	-76.738739	42.768611	60	-76.533427	42.509526	60	-76.897702	42.591707	61	-76.937581	42.736100
102	-76.738684	42.768397	61	-76.533545	42.509731	61	-76.897703	42.591442	62	-76.937559	42.736017
103	-76.738625	42.768173	62	-76.533668	42.509935	62	-76.897694	42.591177	63	-76.937530	42.735923
104	-76.738566	42.767959	63	-76.533782	42.510127	63	-76.897651	42.590931	64	-76.937493	42.735822
105	-76.738503	42.767734	64	-76.533906	42.510333	64	-76.897641	42.590694	65	-76.937452	42.735705
106	-76.738445	42.767520	65	-76.534027	42.510540	65	-76.897640	42.590448	66	-76.937400	42.735577
107	-76.738383	42.767297	66	-76.534147	42.510746	66	-76.897634	42.590200	67	-76.937342	42.735436
108	-76.738323	42.767082	67	-76.534264	42.510953	67	-76.897616	42.589965	68	-76.937279	42.735286
109	-76.738263	42.766854	68	-76.534380	42.511151	68	-76.897580	42.589727	69	-76.937218	42.735127
110	-76.738213	42.766636	69	-76.534492	42.511361	69	-76.897549	42.589486	70	-76.937165	42.734951
111	-76.738160	42.766409	70	-76.534604	42.511572	70	-76.897521	42.589251	71	-76.937119	42.734774
112	-76.738108	42.766194	71	-76.534718	42.511783	71	-76.897523	42.589007	72	-76.937073	42.734583
113	-76.738053	42.765968	72	-76.534831	42.511992	72	-76.897538	42.588761	73	-76.937034	42.734392
114	-76.738001	42.765755	73	-76.534945	42.512202	73	-76.897552	42.588529	74	-76.936992	42.734192
115	-76.737947	42.765531	74	-76.535055	42.512411	74	-76.897563	42.588291	75	-76.936952	42.733991
116	-76.737899	42.765308	75	-76.535163	42.512622	75	-76.897551	42.588055	76	-76.936921	42.733789
117	-76.737853	42.765096	76	-76.535270	42.512834	76	-76.897566	42.587823	77	-76.936886	42.733586
118	-76.737805	42.764873	77	-76.535377	42.513046	77	-76.897577	42.587602	78	-76.936854	42.733371
119	-76.737756	42.764660	78	-76.535477	42.513260	78	-76.897613	42.587374	79	-76.936832	42.733167
120	-76.737705	42.764436	79	-76.535578	42.513473	79	-76.897632	42.587153	80	-76.936809	42.732954
121	-76.737653	42.764222	80	-76.535693	42.513682	80	-76.897667	42.586936	81	-76.936773	42.732753
122	-76.737601	42.763999	81	-76.535807	42.513892	81	-76.897690	42.586707	82	-76.936727	42.732539
123	-76.737551	42.763786	82	-76.535920	42.514103	82	-76.897706	42.586492	83	-76.936677	42.732326
124	-76.737491	42.763563	83	-76.536038	42.514313	83	-76.897724	42.586271	84	-76.936614	42.732116
125	-76.737434	42.763339	84	-76.536154	42.514524	84	-76.897726	42.586043	85	-76.936528	42.731909
126	-76.737387	42.763126	85	-76.536266	42.514736	85	-76.897723	42.585806	86	-76.936410	42.731713
127	-76.737334	42.762900	86	-76.536371	42.514951	86	-76.897715	42.585581	87	-76.936257	42.731529
128	-76.737281	42.762674	87	-76.536466	42.515167	87	-76.897695	42.585358	88	-76.936099	42.731333
129	-76.737233	42.762459	88	-76.536551	42.515386	88	-76.897679	42.585126	89	-76.935949	42.731147
130	-76.737177	42.762231	89	-76.536621	42.515596	89	-76.897666	42.584893	90	-76.935797	42.730960
131	-76.737121	42.762002	90	-76.536690	42.515815	90	-76.897657	42.584667	91	-76.935633	42.730764
132	-76.737068	42.761784	91	-76.536775	42.516030	91	-76.897649	42.584424	92	-76.935472	42.730581
133	-76.737004	42.761557	92	-76.536873	42.516243	92	-76.897649	42.584198	93	-76.935309	42.730400
134	-76.736940	42.761328	93	-76.536977	42.516453	93	-76.897646	42.583971	94	-76.935129	42.730212
135	-76.736884	42.761097	94	-76.537092	42.516662	94	-76.897645	42.583751	95	-76.934950	42.730024
136	-76.736831	42.760876	95	-76.537217	42.516869	95	-76.897627	42.583531	96	-76.934787	42.729844
137	-76.736778	42.760643	96	-76.537343	42.517075	96	-76.897613	42.583301	97	-76.934612	42.729656
138	-76.736730	42.760425	97	-76.537464	42.517269	97	-76.897611	42.583078	98	-76.934445	42.729478
139	-76.736676	42.760199	98	-76.537596	42.517472	98	-76.897592	42.582851	99	-76.934266	42.729293
140	-76.736618	42.759973	99	-76.537722	42.517677	99	-76.897566	42.582640	100	-76.934089	42.729120
141	-76.736566	42.759754	100	-76.537840	42.517886	100	-76.897546	42.582423	101	-76.933901	42.728928
142	-76.736517	42.759536	101	-76.537951	42.518097	101	-76.897546	42.582195	102	-76.933708	42.728763
143	-76.736457	42.759307	102	-76.538058	42.518308	102	-76.897566	42.581975	103	-76.933513	42.728583
144	-76.736397	42.759089	103	-76.538165	42.518519	103	-76.897552	42.581758	104	-76.933341	42.728393
145	-76.736331	42.758861	104	-76.538275	42.518729	104	-76.897542	42.581559	105	-76.933191	42.728206
146	-76.736265	42.758641	105	-76.538385	42.518940	105	-76.897535	42.581359	106	-76.933047	42.728003
147	-76.736198	42.758422	106	-76.538487	42.519140	106	-76.897528	42.581151	107	-76.932918	42.727809
148	-76.736126	42.758192	107	-76.538593	42.519352	107	-76.897526	42.580939	108	-76.932786	42.727602
149	-76.736053	42.757972	108	-76.538698	42.519565	108	-76.897532	42.580712	109	-76.932645	42.727399
150	-76.735968	42.757742	109	-76.538802	42.519777	109	-76.897548	42.580489	110	-76.932506	42.727208
151	-76.735885	42.757523	110	-76.538905	42.519989	110	-76.897561	42.580263	111	-76.932376	42.727002
152	-76.735805	42.757303	111	-76.539004	42.520203	111	-76.897589	42.580047	112	-76.932249	42.726809
153	-76.735730	42.757079	112	-76.539107	42.520416	112	-76.897611	42.579818	113	-76.932112	42.726606
154	-76.735664	42.756841	113	-76.539214	42.520630	113	-76.897608	42.579585	114	-76.931972	42.726403
155	-76.735613	42.756616	114	-76.539328	42.520842	114	-76.897608	42.579348	115	-76.931844	42.726208
156	-76.735572	42.756390	115	-76.539446	42.521051	115	-76.897611	42.579092	116	-76.931712	42.726002

157	-76.735547	42.756165	116	-76.539566	42.521261	116	-76.897601	42.578838	117	-76.931581	42.725808
158	-76.735535	42.755940	117	-76.539676	42.521463	117	-76.897587	42.578602	118	-76.931445	42.725604
159	-76.735520	42.755714	118	-76.539796	42.521673	118	-76.897582	42.578366	119	-76.931322	42.725395
160	-76.735499	42.755487	119	-76.539917	42.521882	119	-76.897585	42.578124	120	-76.931203	42.725196
161	-76.735472	42.755258	120	-76.540035	42.522093	120	-76.897610	42.577880	121	-76.931077	42.724986
162	-76.735446	42.755027	121	-76.540155	42.522304	121	-76.897629	42.577629	122	-76.930951	42.724776
163	-76.735424	42.754797	122	-76.540278	42.522516	122	-76.897639	42.577360	123	-76.930814	42.724571
164	-76.735411	42.754567	123	-76.540403	42.522728	123	-76.897644	42.577104	124	-76.930684	42.724376
165	-76.735396	42.754338	124	-76.540518	42.522930	124	-76.897663	42.576844	125	-76.930550	42.724171
166	-76.735375	42.754109	125	-76.540627	42.523147	125	-76.897678	42.576588	126	-76.930420	42.723965
167	-76.735360	42.753880	126	-76.540727	42.523365	126	-76.897689	42.576355	127	-76.930303	42.723767
168	-76.735358	42.753652	127	-76.540833	42.523578	127	-76.897680	42.576093	128	-76.930183	42.723558
169	-76.735352	42.753437	128	-76.540969	42.523780	128	-76.897646	42.575835	129	-76.930055	42.723349
170	-76.735345	42.753210	129	-76.541123	42.523959	129	-76.897635	42.575587	130	-76.929932	42.723150
171	-76.735340	42.752982	130	-76.541310	42.524130	130	-76.897603	42.575336	131	-76.929801	42.722942
172	-76.735340	42.752754	131	-76.541527	42.524281	131	-76.897554	42.575097	132	-76.929669	42.722736
173	-76.735353	42.752537	132	-76.541742	42.524419	132	-76.897516	42.574846	133	-76.929537	42.722543
174	-76.735380	42.752309	133	-76.541968	42.524570	133	-76.897503	42.574591	134	-76.929394	42.722341
175	-76.735414	42.752082	134	-76.542185	42.524733	134	-76.897491	42.574336	135	-76.929255	42.722138
176	-76.735443	42.751865	135	-76.542400	42.524898	135	-76.897493	42.574097	136	-76.929126	42.721945
177	-76.735463	42.751636	136	-76.542606	42.525054	136	-76.897493	42.573842	137	-76.928989	42.721741
178	-76.735479	42.751407	137	-76.542823	42.525219	137	-76.897487	42.573611	138	-76.928852	42.721536
179	-76.735478	42.751177	138	-76.543048	42.525376	138	-76.897479	42.573384	139	-76.928728	42.721326
180	-76.735460	42.750959	139	-76.543277	42.525531	139	-76.897493	42.573160	140	-76.928617	42.721125
181	-76.735422	42.750729	140	-76.543503	42.525687	140	-76.897505	42.572931	141	-76.928500	42.720913
182	-76.735360	42.750500	141	-76.543731	42.525840	141	-76.897530	42.572710	142	-76.928385	42.720700
183	-76.735281	42.750284	142	-76.543960	42.525990	142	-76.897535	42.572485	143	-76.928274	42.720500
184	-76.735187	42.750058	143	-76.544187	42.526142	143	-76.897545	42.572268	144	-76.928141	42.720296
185	-76.735105	42.749832	144	-76.544418	42.526291	144	-76.897567	42.572031	145	-76.927998	42.720096
186	-76.735034	42.749618	145	-76.544637	42.526432	145	-76.897614	42.571806	146	-76.927856	42.719908
187	-76.734963	42.749394	146	-76.544871	42.526583	146	-76.897637	42.571585	147	-76.927685	42.719718
188	-76.734900	42.749170	147	-76.545103	42.526737	147	-76.897673	42.571366	148	-76.927503	42.719534
189	-76.734846	42.748954	148	-76.545334	42.526890	148	-76.897720	42.571132	149	-76.927331	42.719347
190	-76.734791	42.748727	149	-76.545569	42.527039	149	-76.897756	42.570912	150	-76.927171	42.719165
191	-76.734735	42.748512	150	-76.545791	42.527180	150	-76.897785	42.570681	151	-76.926998	42.718976
192	-76.734673	42.748285	151	-76.546026	42.527328	151	-76.897820	42.570446	152	-76.926824	42.718787
193	-76.734611	42.748070	152	-76.546261	42.527474	152	-76.897841	42.570232	153	-76.926659	42.718608
194	-76.734552	42.747842	153	-76.546499	42.527619	153	-76.897874	42.570005	154	-76.926483	42.718420
195	-76.734492	42.747626	154	-76.546725	42.527757	154	-76.897882	42.569779	155	-76.926304	42.718236
196	-76.734427	42.747397	155	-76.546967	42.527902	155	-76.897890	42.569573	156	-76.926122	42.718052
197	-76.734368	42.747180	156	-76.547209	42.528046	156	-76.897950	42.569350	157	-76.925958	42.717874
198	-76.734298	42.746949	157	-76.547454	42.528188	157	-76.897989	42.569129	158	-76.925793	42.717682
199	-76.734234	42.746731	158	-76.547688	42.528322	158	-76.898027	42.568920	159	-76.925626	42.717492
200	-76.734168	42.746513	159	-76.547938	42.528461	159	-76.898058	42.568695	160	-76.925456	42.717303
201	-76.734095	42.746286	160	-76.548192	42.528595	160	-76.898085	42.568459	161	-76.925300	42.717120
202	-76.734027	42.746071	161	-76.548449	42.528729	161	-76.898091	42.568221	162	-76.925141	42.716921
203	-76.733957	42.745844	162	-76.548688	42.528859	162	-76.898100	42.568001	163	-76.924983	42.716725
204	-76.733882	42.745631	163	-76.548938	42.528992	163	-76.898083	42.567765	164	-76.924818	42.716531
205	-76.733798	42.745420	164	-76.549191	42.529125	164	-76.898071	42.567506	165	-76.924670	42.716342
206	-76.733719	42.745198	165	-76.549445	42.529258	165	-76.898083	42.567293	166	-76.924518	42.716142
207	-76.733647	42.744986	166	-76.549683	42.529390	166	-76.898091	42.567073	167	-76.924357	42.715942
208	-76.733569	42.744773	167	-76.549932	42.529534	167	-76.898113	42.566833	168	-76.924193	42.715745
209	-76.733479	42.744550	168	-76.550165	42.529671	168	-76.898137	42.566596	169	-76.924045	42.715556
210	-76.733396	42.744336	169	-76.550409	42.529816	169	-76.898199	42.566386	170	-76.923901	42.715352
211	-76.733319	42.744123	170	-76.550658	42.529958	170	-76.898258	42.566157	171	-76.923762	42.715145
212	-76.733237	42.743897	171	-76.550894	42.530094	171	-76.898287	42.565929	172	-76.923616	42.714940
213	-76.733159	42.743681	172	-76.551142	42.530237	172	-76.898339	42.565713	173	-76.923476	42.714745
214	-76.733082	42.743464	173	-76.551391	42.530383	173	-76.898359	42.565482	174	-76.923328	42.714540
215	-76.733004	42.743235	174	-76.551626	42.530524	174	-76.898375	42.565266	175	-76.923178	42.714335

216	-76.732928	42.743016	175	-76.551872	42.530676	175	-76.898394	42.565052	176	-76.923031	42.714144
217	-76.732850	42.742785	176	-76.552108	42.530820	176	-76.898424	42.564824	177	-76.922878	42.713941
218	-76.732777	42.742566	177	-76.552358	42.530971	177	-76.898472	42.564613	178	-76.922722	42.713739
219	-76.732707	42.742347	178	-76.552595	42.531114	178	-76.898492	42.564365	179	-76.922576	42.713546
220	-76.732634	42.742131	179	-76.552844	42.531264	179	-76.898512	42.564182	180	-76.922420	42.713345
221	-76.732560	42.741898	180	-76.553084	42.531400	180	-76.898537	42.563954	181	-76.922263	42.713159
222	-76.732499	42.741679	181	-76.553329	42.531532	181	-76.898592	42.563746	182	-76.922088	42.712968
223	-76.732434	42.741461	182	-76.553585	42.531675	182	-76.898638	42.563524	183	-76.921920	42.712789
224	-76.732359	42.741244	183	-76.553823	42.531814	183	-76.898668	42.563319	184	-76.921749	42.712596
225	-76.732283	42.741015	184	-76.554057	42.531955	184	-76.898672	42.563081	185	-76.921589	42.712411
226	-76.732211	42.740798	185	-76.554303	42.532105	185	-76.898689	42.562900	186	-76.921424	42.712214
227	-76.732136	42.740578	186	-76.554537	42.532246	186	-76.898707	42.562681	187	-76.921287	42.712020
228	-76.732074	42.740357	187	-76.554771	42.532386	187	-76.898753	42.562453	188	-76.921157	42.711811
229	-76.732023	42.740137	188	-76.555008	42.532522	188	-76.898780	42.562210	189	-76.921034	42.711614
230	-76.731986	42.739917	189	-76.555261	42.532664	189	-76.898818	42.562028	190	-76.920889	42.711412
231	-76.731965	42.739699	190	-76.555501	42.532796	190	-76.898842	42.561805	191	-76.920753	42.711220
232	-76.731953	42.739482	191	-76.555745	42.532925	191	-76.898857	42.561575	192	-76.920602	42.711019
233	-76.731950	42.739266	192	-76.555988	42.533052	192	-76.898872	42.561343	193	-76.920459	42.710830
234	-76.731957	42.739050	193	-76.556235	42.533175	193	-76.898907	42.561119	194	-76.920311	42.710630
235	-76.731971	42.738834	194	-76.556482	42.533299	194	-76.898961	42.560902	195	-76.920177	42.710436
236	-76.731993	42.738607	195	-76.556746	42.533430	195	-76.899030	42.560679	196	-76.920040	42.710230
237	-76.732010	42.738392	196	-76.556992	42.533558	196	-76.899088	42.560461	197	-76.919913	42.710033
238	-76.732027	42.738178	197	-76.557232	42.533692	197	-76.899087	42.560237	198	-76.919785	42.709824
239	-76.732038	42.737966	198	-76.557465	42.533829	198	-76.899075	42.560014	199	-76.919661	42.709627
240	-76.732044	42.737753	199	-76.557696	42.533970	199	-76.899057	42.559788	200	-76.919526	42.709421
241	-76.732052	42.737529	200	-76.557937	42.534120	200	-76.899048	42.559560	201	-76.919403	42.709222
242	-76.732057	42.737315	201	-76.558168	42.534259	201	-76.899013	42.559330	202	-76.919279	42.709011
243	-76.732067	42.737101	202	-76.558399	42.534397	202	-76.898977	42.559099	203	-76.919150	42.708800
244	-76.732082	42.736876	203	-76.558631	42.534533	203	-76.898947	42.558873	204	-76.919014	42.708607
245	-76.732099	42.736661	204	-76.558880	42.534674	204	-76.898952	42.558646	205	-76.918850	42.708410
246	-76.732115	42.736436	205	-76.559119	42.534804	205	-76.898992	42.558387	206	-76.918693	42.708224
247	-76.732133	42.736222	206	-76.559361	42.534931	206	-76.899046	42.558170	207	-76.918542	42.708023
248	-76.732156	42.735996	207	-76.559605	42.535058	207	-76.899055	42.557969	208	-76.918396	42.707821
249	-76.732180	42.735771	208	-76.559862	42.535192	208	-76.899054	42.557750	209	-76.918271	42.707626
250	-76.732203	42.735557	209	-76.560107	42.535318	209	-76.899050	42.557530	210	-76.918145	42.707416
251	-76.732221	42.735331	210	-76.560352	42.535444	210	-76.899031	42.557310	211	-76.918024	42.707214
252	-76.732233	42.735102	211	-76.560607	42.535582	211	-76.899023	42.557084	212	-76.917894	42.707002
253	-76.732247	42.734877	212	-76.560844	42.535717	212	-76.899029	42.556853	213	-76.917760	42.706804
254	-76.732248	42.734660	213	-76.561078	42.535854	213	-76.899035	42.556636	214	-76.917630	42.706591
255	-76.732244	42.734432	214	-76.561324	42.536002	214	-76.899034	42.556409	215	-76.917510	42.706373
256	-76.732233	42.734204	215	-76.561553	42.536145	215	-76.899032	42.556185	216	-76.917399	42.706164
257	-76.732209	42.733976	216	-76.561794	42.536296	216	-76.899025	42.555963	217	-76.917278	42.705947
258	-76.732177	42.733759	217	-76.562026	42.536436	217	-76.899018	42.555743	218	-76.917159	42.705744
259	-76.732136	42.733532	218	-76.562263	42.536572	218	-76.899015	42.555521	219	-76.917032	42.705534
260	-76.732087	42.733305	219	-76.562516	42.536714	219	-76.898993	42.555301	220	-76.916916	42.705330
261	-76.732040	42.733078	220	-76.562754	42.536851	220	-76.898975	42.555077	221	-76.916799	42.705116
262	-76.732001	42.732850	221	-76.562988	42.536992	221	-76.898966	42.554852	222	-76.916678	42.704917
263	-76.731965	42.732632	222	-76.563233	42.537143	222	-76.898951	42.554635	223	-76.916532	42.704711
264	-76.731936	42.732402	223	-76.563467	42.537287	223	-76.898931	42.554427	224	-76.916385	42.704519
265	-76.731918	42.732169	224	-76.563699	42.537432	224	-76.898906	42.554206	225	-76.916234	42.704315
266	-76.731912	42.731935	225	-76.563941	42.537587	225	-76.898865	42.553987	226	-76.916090	42.704123
267	-76.731905	42.731714	226	-76.564168	42.537734	226	-76.898824	42.553764	227	-76.915949	42.703928
268	-76.731896	42.731479	227	-76.564399	42.537878	227	-76.898775	42.553548	228	-76.915804	42.703718
269	-76.731886	42.731245	228	-76.564628	42.538022	228	-76.898754	42.553334	229	-76.915670	42.703518
270	-76.731873	42.731024	229	-76.564870	42.538174	229	-76.898732	42.553102	230	-76.915519	42.703312
271	-76.731860	42.730790	230	-76.565101	42.538316	230	-76.898709	42.552886	231	-76.915372	42.703118
272	-76.731847	42.730569	231	-76.565332	42.538458	231	-76.898704	42.552662	232	-76.915227	42.702924
273	-76.731834	42.730337	232	-76.565562	42.538601	232	-76.898697	42.552469	233	-76.915083	42.702718
274	-76.731825	42.730116	233	-76.565804	42.538752	233	-76.898669	42.552244	234	-76.914951	42.702523

275	-76.731809	42.729874	234	-76.566032	42.538897	234	-76.898653	42.552020	235	-76.914810	42.702328
276	-76.731791	42.729650	235	-76.566261	42.539042	235	-76.898608	42.551802	236	-76.914668	42.702117
277	-76.731766	42.729417	236	-76.566488	42.539188	236	-76.898567	42.551579	237	-76.914530	42.701917
278	-76.731746	42.729196	237	-76.566717	42.539334	237	-76.898530	42.551338	238	-76.914384	42.701706
279	-76.731715	42.728965	238	-76.566958	42.539488	238	-76.898476	42.551117	239	-76.914253	42.701504
280	-76.731686	42.728749	239	-76.567187	42.539631	239	-76.898432	42.550895	240	-76.914113	42.701306
281	-76.731660	42.728532	240	-76.567418	42.539773	240	-76.898381	42.550659	241	-76.913957	42.701099
282	-76.731627	42.728304	241	-76.567649	42.539914	241	-76.898338	42.550433	242	-76.913811	42.700903
283	-76.731580	42.728090	242	-76.567880	42.540055	242	-76.898292	42.550203	243	-76.913657	42.700711
284	-76.731533	42.727879	243	-76.568129	42.540201	243	-76.898253	42.549955	244	-76.913503	42.700522
285	-76.731484	42.727668	244	-76.568359	42.540344	244	-76.898236	42.549722	245	-76.913346	42.700325
286	-76.731431	42.727444	245	-76.568590	42.540485	245	-76.898188	42.549491	246	-76.913198	42.700138
287	-76.731383	42.727231	246	-76.568820	42.540625	246	-76.898153	42.549269	247	-76.913052	42.699949
288	-76.731338	42.727016	247	-76.569053	42.540765	247	-76.898117	42.549043	248	-76.912913	42.699754
289	-76.731289	42.726789	248	-76.569300	42.540912	248	-76.898056	42.548798	249	-76.912767	42.699547
290	-76.731239	42.726573	249	-76.569534	42.541050	249	-76.898003	42.548567	250	-76.912621	42.699353
291	-76.731186	42.726344	250	-76.569768	42.541187	250	-76.897990	42.548338	251	-76.912484	42.699156
292	-76.731130	42.726128	251	-76.569997	42.541328	251	-76.897959	42.548121	252	-76.912342	42.698961
293	-76.731068	42.725904	252	-76.570240	42.541476	252	-76.897933	42.547890	253	-76.912176	42.698760
294	-76.731000	42.725691	253	-76.570471	42.541615	253	-76.897911	42.547659	254	-76.912024	42.698567
295	-76.730918	42.725470	254	-76.570697	42.541754	254	-76.897894	42.547428	255	-76.911877	42.698372
296	-76.730823	42.725263	255	-76.570922	42.541891	255	-76.897869	42.547200	256	-76.911723	42.698168
297	-76.730715	42.725047	256	-76.571159	42.542033	256	-76.897833	42.546971	257	-76.911576	42.697978
298	-76.730631	42.724838	257	-76.571385	42.542166	257	-76.897796	42.546755	258	-76.911427	42.697788
299	-76.730571	42.724616	258	-76.571613	42.542298	258	-76.897774	42.546527	259	-76.911275	42.697587
300	-76.730531	42.724402	259	-76.571841	42.542429	259	-76.897765	42.546299	260	-76.911127	42.697399
301	-76.730499	42.724179	260	-76.572082	42.542566	260	-76.897760	42.546070	261	-76.910986	42.697210
302	-76.730474	42.723968	261	-76.572312	42.542695	261	-76.897773	42.545854	262	-76.910843	42.697018
303	-76.730442	42.723746	262	-76.572543	42.542823	262	-76.897781	42.545623	263	-76.910686	42.696817
304	-76.730393	42.723527	263	-76.572788	42.542956	263	-76.897780	42.545399	264	-76.910532	42.696628
305	-76.730340	42.723320	264	-76.573023	42.543080	264	-76.897758	42.545194	265	-76.910383	42.696437
306	-76.730276	42.723102	265	-76.573271	42.543210	265	-76.897731	42.544973	266	-76.910229	42.696232
307	-76.730206	42.722896	266	-76.573518	42.543340	266	-76.897711	42.544743	267	-76.910083	42.696036
308	-76.730130	42.722678	267	-76.573748	42.543466	267	-76.897689	42.544526	268	-76.909938	42.695840
309	-76.730071	42.722460	268	-76.573993	42.543598	268	-76.897692	42.544291	269	-76.909783	42.695633
310	-76.730009	42.722239	269	-76.574240	42.543729	269	-76.897699	42.544067	270	-76.909635	42.695438
311	-76.729948	42.722026	270	-76.574477	42.543853	270	-76.897703	42.543860	271	-76.909482	42.695231
312	-76.729896	42.721798	271	-76.574731	42.543983	271	-76.897681	42.543637	272	-76.909331	42.695034
313	-76.729851	42.721570	272	-76.574985	42.544113	272	-76.897650	42.543411	273	-76.909177	42.694838
314	-76.729821	42.721341	273	-76.575246	42.544242	273	-76.897617	42.543184	274	-76.909012	42.694629
315	-76.729807	42.721113	274	-76.575496	42.544365	274	-76.897619	42.542972	275	-76.908860	42.694425
316	-76.729801	42.720885	275	-76.575760	42.544497	275	-76.897632	42.542743	276	-76.908725	42.694215
317	-76.729788	42.720659	276	-76.576023	42.544630	276	-76.897629	42.542513	277	-76.908599	42.693992
318	-76.729754	42.720434	277	-76.576287	42.544764	277	-76.897621	42.542281	278	-76.908482	42.693782
319	-76.729700	42.720224	278	-76.576549	42.544898	278	-76.897601	42.542077	279	-76.908345	42.693576
320	-76.729608	42.720011	279	-76.576811	42.545033	279	-76.897586	42.541856	280	-76.908188	42.693375
321	-76.729478	42.719807	280	-76.577059	42.545161	280	-76.897603	42.541632	281	-76.908022	42.693178
322	-76.729321	42.719608	281	-76.577323	42.545293	281	-76.897618	42.541401	282	-76.907850	42.692985
323	-76.729157	42.719407	282	-76.577585	42.545426	282	-76.897630	42.541173	283	-76.907674	42.692794
324	-76.729000	42.719216	283	-76.577835	42.545552	283	-76.897633	42.540943	284	-76.907512	42.692597
325	-76.728822	42.719022	284	-76.578092	42.545688	284	-76.897637	42.540724	285	-76.907369	42.692395
326	-76.728640	42.718831	285	-76.578348	42.545824	285	-76.897660	42.540491	286	-76.907229	42.692192
327	-76.728458	42.718641	286	-76.578593	42.545950	286	-76.897686	42.540256	287	-76.907092	42.691985
328	-76.728277	42.718446	287	-76.578837	42.546076	287	-76.897697	42.540027	288	-76.906957	42.691780
329	-76.728118	42.718254	288	-76.579094	42.546208	288	-76.897682	42.539798	289	-76.906832	42.691587
330	-76.727957	42.718048	289	-76.579335	42.546336	289	-76.897671	42.539567	290	-76.906700	42.691383
331	-76.727793	42.717843	290	-76.579582	42.546478	290	-76.897698	42.539351	291	-76.906564	42.691180
332	-76.727625	42.717639	291	-76.579814	42.546614	291	-76.897724	42.539129	292	-76.906424	42.690977
333	-76.727467	42.717447	292	-76.580042	42.546753	292	-76.897775	42.538905	293	-76.906292	42.690785

334	-76.727304	42.717244	293	-76.580283	42.546897	293	-76.897794	42.538681	294	-76.906153	42.690581
335	-76.727141	42.717054	294	-76.580512	42.547032	294	-76.897772	42.538475	295	-76.906013	42.690378
336	-76.726966	42.716856	295	-76.580743	42.547166	295	-76.897791	42.538253	296	-76.905867	42.690179
337	-76.726805	42.716664	296	-76.580988	42.547307	296	-76.897830	42.538029	297	-76.905731	42.689991
338	-76.726643	42.716473	297	-76.581220	42.547441	297	-76.897885	42.537823	298	-76.905597	42.689790
339	-76.726469	42.716273	298	-76.581465	42.547581	298	-76.897966	42.537601	299	-76.905471	42.689585
340	-76.726304	42.716089	299	-76.581698	42.547714	299	-76.898005	42.537376	300	-76.905359	42.689376
341	-76.726134	42.715902	300	-76.581943	42.547854	300	-76.898063	42.537157	301	-76.905252	42.689169
342	-76.725955	42.715702	301	-76.582174	42.547986	301	-76.898124	42.536949	302	-76.905152	42.688973
343	-76.725784	42.715510	302	-76.582419	42.548125	302	-76.898196	42.536722	303	-76.905036	42.688767
344	-76.725616	42.715314	303	-76.582654	42.548256	303	-76.898281	42.536499	304	-76.904910	42.688564
345	-76.725454	42.715117	304	-76.582900	42.548395	304	-76.898324	42.536272	305	-76.904783	42.688363
346	-76.725289	42.714923	305	-76.583134	42.548527	305	-76.898364	42.536037	306	-76.904654	42.688165
347	-76.725120	42.714732	306	-76.583380	42.548667	306	-76.898417	42.535806	307	-76.904530	42.687979
348	-76.724949	42.714542	307	-76.583614	42.548800	307	-76.898445	42.535575	308	-76.904390	42.687784
349	-76.724768	42.714343	308	-76.583862	42.548939	308	-76.898473	42.535360	309	-76.904248	42.687585
350	-76.724595	42.714152	309	-76.584097	42.549072	309	-76.898488	42.535132	310	-76.904108	42.687383
351	-76.724418	42.713962	310	-76.584345	42.549212	310	-76.898481	42.534904	311	-76.903979	42.687178
352	-76.724251	42.713784	311	-76.584589	42.549357	311	-76.898469	42.534667	312	-76.903861	42.686973
353	-76.724076	42.713596	312	-76.584815	42.549497	312	-76.898442	42.534434	313	-76.903737	42.686771
354	-76.723908	42.713407	313	-76.585055	42.549644	313	-76.898411	42.534223	314	-76.903595	42.686576
355	-76.723748	42.713213	314	-76.585284	42.549784	314	-76.898406	42.533995	315	-76.903428	42.686373
356	-76.723591	42.713018	315	-76.585526	42.549931	315	-76.898456	42.533765	316	-76.903267	42.686181
357	-76.723424	42.712826	316	-76.585769	42.550079	316	-76.898553	42.533556	317	-76.903107	42.685987
358	-76.723249	42.712635	317	-76.585998	42.550219	317	-76.898710	42.533344	318	-76.902946	42.685795
359	-76.723084	42.712451	318	-76.586239	42.550369	318	-76.898847	42.533130	319	-76.902777	42.685607
360	-76.722914	42.712256	319	-76.586465	42.550512	319	-76.898937	42.532927	320	-76.902600	42.685423
361	-76.722749	42.712058	320	-76.586702	42.550665	320	-76.898985	42.532703	321	-76.902431	42.685238
362	-76.722585	42.711863	321	-76.586935	42.550821	321	-76.899017	42.532489	322	-76.902260	42.685053
363	-76.722414	42.711672	322	-76.587154	42.550971	322	-76.899066	42.532262	323	-76.902085	42.684870
364	-76.722254	42.711490	323	-76.587385	42.551128	323	-76.899139	42.532035	324	-76.901908	42.684689
365	-76.722082	42.711299	324	-76.587609	42.551273	324	-76.899215	42.531824	325	-76.901733	42.684506
366	-76.721912	42.711111	325	-76.587847	42.551424	325	-76.899311	42.531593	326	-76.901554	42.684321
367	-76.721738	42.710921	326	-76.588075	42.551565	326	-76.899407	42.531379	327	-76.901369	42.684138
368	-76.721576	42.710739	327	-76.588319	42.551712	327	-76.899491	42.531151	328	-76.901184	42.683955
369	-76.721404	42.710547	328	-76.588555	42.551848	328	-76.899535	42.530927	329	-76.901017	42.683766
370	-76.721234	42.710353	329	-76.588807	42.551989	329	-76.899538	42.530714	330	-76.900861	42.683570
371	-76.721075	42.710169	330	-76.589047	42.552121	330	-76.899535	42.530481	331	-76.900721	42.683363
372	-76.720904	42.709976	331	-76.589291	42.552248	331	-76.899537	42.530268	332	-76.900600	42.683149
373	-76.720732	42.709781	332	-76.589551	42.552381	332	-76.899562	42.530037	333	-76.900496	42.682930
374	-76.720575	42.709593	333	-76.589798	42.552506	333	-76.899600	42.529824	334	-76.900409	42.682709
375	-76.720414	42.709392	334	-76.590061	42.552636	334	-76.899648	42.529598	335	-76.900322	42.682488
376	-76.720253	42.709189	335	-76.590313	42.552757	335	-76.899678	42.529382	336	-76.900233	42.682269
377	-76.720096	42.708999	336	-76.590578	42.552888	336	-76.899705	42.529158	337	-76.900139	42.682053
378	-76.719925	42.708800	337	-76.590825	42.553017	337	-76.899731	42.528944	338	-76.900036	42.681841
379	-76.719763	42.708613	338	-76.591066	42.553151	338	-76.899764	42.528716	339	-76.899927	42.681631
380	-76.719593	42.708416	339	-76.591313	42.553300	339	-76.899807	42.528481	340	-76.899803	42.681426
381	-76.719425	42.708220	340	-76.591541	42.553446	340	-76.899843	42.528260	341	-76.899659	42.681229
382	-76.719265	42.708036	341	-76.591778	42.553606	341	-76.899876	42.528020	342	-76.899510	42.681048
383	-76.719093	42.707840	342	-76.591995	42.553764	342	-76.899920	42.527796	343	-76.899340	42.680862
384	-76.718932	42.707650	343	-76.592206	42.553928	343	-76.900010	42.527567	344	-76.899163	42.680678
385	-76.718775	42.707458	344	-76.592420	42.554107	344	-76.900056	42.527334	345	-76.898984	42.680494
386	-76.718608	42.707259	345	-76.592620	42.554278	345	-76.900049	42.527117	346	-76.898813	42.680304
387	-76.718444	42.707072	346	-76.592827	42.554443	346	-76.900046	42.526894	347	-76.898667	42.680119
388	-76.718272	42.706874	347	-76.593042	42.554602	347	-76.900067	42.526678	348	-76.898520	42.679920
389	-76.718112	42.706683	348	-76.593276	42.554764	348	-76.900096	42.526442	349	-76.898377	42.679719
390	-76.717951	42.706490	349	-76.593505	42.554913	349	-76.900116	42.526231	350	-76.898240	42.679516
391	-76.717785	42.706287	350	-76.593740	42.555057	350	-76.900104	42.526027	351	-76.898110	42.679310
392	-76.717631	42.706096	351	-76.593981	42.555196	351	-76.900064	42.525800	352	-76.897987	42.679102

393	-76.717471	42.705908	352	-76.594226	42.555332	352	-76.900063	42.525585	353	-76.897875	42.678892
394	-76.717300	42.705710	353	-76.594474	42.555462	353	-76.900078	42.525351	354	-76.897776	42.678679
395	-76.717141	42.705522	354	-76.594737	42.555599	354	-76.900093	42.525134	355	-76.897689	42.678463
396	-76.716977	42.705333	355	-76.594987	42.555728	355	-76.900115	42.524908	356	-76.897619	42.678255
397	-76.716807	42.705130	356	-76.595238	42.555858	356	-76.900100	42.524695	357	-76.897552	42.678033
398	-76.716652	42.704935	357	-76.595488	42.555991	357	-76.900073	42.524471	358	-76.897480	42.677814
399	-76.716500	42.704738	358	-76.595737	42.556125	358	-76.900049	42.524253	359	-76.897374	42.677605
400	-76.716345	42.704542	359	-76.595986	42.556257	359	-76.900028	42.524018	360	-76.897234	42.677409
401	-76.716191	42.704345	360	-76.596236	42.556388	360	-76.900020	42.523779	361	-76.897066	42.677225
402	-76.716029	42.704138	361	-76.596491	42.556515	361	-76.900040	42.523556	362	-76.896897	42.677040
403	-76.715868	42.703956	362	-76.596748	42.556640	362	-76.900077	42.523319	363	-76.896735	42.676850
404	-76.715718	42.703747	363	-76.597004	42.556767	363	-76.900136	42.523087	364	-76.896591	42.676666
405	-76.715562	42.703552	364	-76.597257	42.556896	364	-76.900176	42.522874	365	-76.896441	42.676471
406	-76.715399	42.703357	365	-76.597507	42.557027	365	-76.900194	42.522648	366	-76.896286	42.676276
407	-76.715231	42.703163	366	-76.597756	42.557160	366	-76.900194	42.522439	367	-76.896129	42.676082
408	-76.715060	42.702969	367	-76.598002	42.557295	367	-76.900187	42.522208	368	-76.895971	42.675888
409	-76.714885	42.702776	368	-76.598252	42.557426	368	-76.900153	42.522016	369	-76.895822	42.675689
410	-76.714707	42.702596	369	-76.598513	42.557561	369	-76.900151	42.521752	370	-76.895675	42.675489
411	-76.714546	42.702395	370	-76.598764	42.557692	370	-76.900153	42.521528	371	-76.895531	42.675287
412	-76.714380	42.702200	371	-76.599016	42.557823	371	-76.900152	42.521295	372	-76.895397	42.675080
413	-76.714209	42.702005	372	-76.599265	42.557958	372	-76.900145	42.521071	373	-76.895271	42.674872
414	-76.714041	42.701809	373	-76.599498	42.558085	373	-76.900151	42.520830	374	-76.895146	42.674662
415	-76.713877	42.701610	374	-76.599751	42.558214	374	-76.900151	42.520592	375	-76.895018	42.674453
416	-76.713722	42.701394	375	-76.600005	42.558344	375	-76.900165	42.520368	376	-76.894882	42.674247
417	-76.713559	42.701211	376	-76.600254	42.558478	376	-76.900205	42.520131	377	-76.894736	42.674044
418	-76.713408	42.701023	377	-76.600502	42.558615	377	-76.900259	42.519910	378	-76.894579	42.673847
419	-76.713251	42.700823	378	-76.600746	42.558756	378	-76.900320	42.519690	379	-76.894404	42.673657
420	-76.713090	42.700627	379	-76.600988	42.558899	379	-76.900387	42.519456	380	-76.894224	42.673468
421	-76.712930	42.700430	380	-76.601210	42.559030	380	-76.900445	42.519238	381	-76.894047	42.673276
422	-76.712782	42.700244	381	-76.601449	42.559175	381	-76.900458	42.519022	382	-76.893875	42.673083
423	-76.712628	42.700034	382	-76.601684	42.559323	382	-76.900437	42.518788	383	-76.893717	42.672899
424	-76.712476	42.699860	383	-76.601925	42.559478	383	-76.900416	42.518569	384	-76.893546	42.672708
425	-76.712314	42.699665	384	-76.602159	42.559625	384	-76.900388	42.518349	385	-76.893367	42.672521
426	-76.712143	42.699479	385	-76.602378	42.559766	385	-76.900342	42.518137	386	-76.893186	42.672334
427	-76.711986	42.699296	386	-76.602604	42.559921	386	-76.900305	42.517910	387	-76.893010	42.672161
428	-76.711828	42.699092	387	-76.602822	42.560081	387	-76.900283	42.517692	388	-76.892813	42.671982
429	-76.711665	42.698883	388	-76.603036	42.560245	388	-76.900281	42.517474	389	-76.892608	42.671806
430	-76.711503	42.698723	389	-76.603244	42.560411	389	-76.900298	42.517255	390	-76.892400	42.671633
431	-76.711343	42.698525	390	-76.603440	42.560567	390	-76.900343	42.517026	391	-76.892197	42.671473
432	-76.711188	42.698326	391	-76.603648	42.560732	391	-76.900395	42.516813	392	-76.891974	42.671309
433	-76.711039	42.698140	392	-76.603853	42.560898	392	-76.900447	42.516597	393	-76.891752	42.671143
434	-76.710875	42.697946	393	-76.604055	42.561065	393	-76.900509	42.516367	394	-76.891545	42.670985
435	-76.710724	42.697762	394	-76.604242	42.561225	394	-76.900557	42.516146	395	-76.891339	42.670809
436	-76.710563	42.697566	395	-76.604438	42.561396	395	-76.900616	42.515905	396	-76.891156	42.670623
437	-76.710400	42.697368	396	-76.604622	42.561563	396	-76.900642	42.515649	397	-76.891009	42.670438
438	-76.710245	42.697181	397	-76.604808	42.561738	397	-76.900618	42.515428	398	-76.890879	42.670231
439	-76.710079	42.696985	398	-76.604990	42.561914	398	-76.900590	42.515191	399	-76.890780	42.670030
440	-76.709909	42.696792	399	-76.605165	42.562078	399	-76.900558	42.514966	400	-76.890702	42.669810
441	-76.709739	42.696600	400	-76.605366	42.562251	400	-76.900531	42.514741	401	-76.890644	42.669598
442	-76.709578	42.696416	401	-76.605569	42.562408	401	-76.900486	42.514501	402	-76.890595	42.669375
443	-76.709411	42.696218	402	-76.605780	42.562558	402	-76.900420	42.514281	403	-76.890573	42.669152
444	-76.709246	42.696018	403	-76.605997	42.562704	403	-76.900391	42.514059	404	-76.890557	42.668940
445	-76.709090	42.695830	404	-76.606218	42.562847	404	-76.900399	42.513837	405	-76.890521	42.668714
446	-76.708921	42.695632	405	-76.606440	42.562990	405	-76.900431	42.513613	406	-76.890471	42.668488
447	-76.708762	42.695445	406	-76.606660	42.563135	406	-76.900487	42.513389	407	-76.890439	42.668274
448	-76.708593	42.695246	407	-76.606881	42.563276	407	-76.900554	42.513161	408	-76.890426	42.668048
449	-76.708428	42.695047	408	-76.607102	42.563418	408	-76.900633	42.512936	409	-76.890412	42.667822
450	-76.708272	42.694860	409	-76.607331	42.563571	409	-76.900718	42.512715	410	-76.890396	42.667608
451	-76.708099	42.694663	410	-76.607549	42.563715	410	-76.900782	42.512497	411	-76.890376	42.667383

452	-76.707937	42.694475	411	-76.607762	42.563850	411	-76.900827	42.512278	412	-76.890356	42.667160
453	-76.707768	42.694274	412	-76.607987	42.563988	412	-76.900869	42.512059	413	-76.890335	42.666938
454	-76.707612	42.694084	413	-76.608226	42.564134	413	-76.900906	42.511848	414	-76.890320	42.666729
455	-76.707446	42.693884	414	-76.608455	42.564269	414	-76.900935	42.511638	415	-76.890306	42.666506
456	-76.707292	42.693694	415	-76.608690	42.564416	415	-76.900939	42.511520	416	-76.890299	42.666283
457	-76.707130	42.693493	416	-76.608919	42.564563	416	-76.900953	42.511201	417	-76.890304	42.666062
458	-76.706977	42.693304	417	-76.609152	42.564711	417	-76.900903	42.510996	418	-76.890307	42.665840
459	-76.706825	42.693114	418	-76.609374	42.564850	418	-76.900866	42.510779	419	-76.890302	42.665630
460	-76.706663	42.692913	419	-76.609609	42.564997	419	-76.900837	42.510563	420	-76.890307	42.665408
461	-76.706508	42.692724	420	-76.609832	42.565136	420	-76.900840	42.510328	421	-76.890320	42.665186
462	-76.706351	42.692537	421	-76.610069	42.565280	421	-76.900873	42.510109	422	-76.890338	42.664966
463	-76.706179	42.692342	422	-76.610296	42.565414	422	-76.900924	42.509883	423	-76.890348	42.664745
464	-76.706018	42.692159	423	-76.610539	42.565554	423	-76.901000	42.509642	424	-76.890351	42.664523
465	-76.705855	42.691977	424	-76.610786	42.565691	424	-76.901081	42.509417	425	-76.890349	42.664300
466	-76.705683	42.691783	425	-76.611018	42.565823	425	-76.901167	42.509199	426	-76.890356	42.664078
467	-76.705522	42.691602	426	-76.611264	42.565962	426	-76.901260	42.508987	427	-76.890366	42.663857
468	-76.705361	42.691421	427	-76.611517	42.566098	427	-76.901325	42.508760	428	-76.890385	42.663638
469	-76.705187	42.691231	428	-76.611759	42.566223	428	-76.901392	42.508543	429	-76.890405	42.663416
470	-76.705022	42.691052	429	-76.612018	42.566353	429	-76.901473	42.508333	430	-76.890422	42.663192
471	-76.704858	42.690873	430	-76.612281	42.566479	430	-76.901533	42.508128	431	-76.890442	42.662966
472	-76.704689	42.690682	431	-76.612525	42.566592	431	-76.901599	42.507915	432	-76.890468	42.662728
473	-76.704531	42.690500	432	-76.612788	42.566719	432	-76.901667	42.507699	433	-76.890495	42.662502
474	-76.704358	42.690309	433	-76.613049	42.566850	433	-76.901731	42.507472	434	-76.890521	42.662275
475	-76.704196	42.690128	434	-76.613298	42.566983	434	-76.901782	42.507257	435	-76.890545	42.662050
476	-76.704030	42.689934	435	-76.613551	42.567120	435	-76.901841	42.507043	436	-76.890568	42.661825
477	-76.703875	42.689753	436	-76.613800	42.567261	436	-76.901892	42.506826	437	-76.890592	42.661600
478	-76.703711	42.689561	437	-76.614034	42.567397	437	-76.901926	42.506608	438	-76.890616	42.661376
479	-76.703559	42.689380	438	-76.614281	42.567541	438	-76.901956	42.506373	439	-76.890643	42.661139
480	-76.703391	42.689192	439	-76.614527	42.567686	439	-76.901997	42.506155	440	-76.890675	42.660914
481	-76.703230	42.689016	440	-76.614760	42.567825	440	-76.902058	42.505936	441	-76.890711	42.660688
482	-76.703056	42.688831	441	-76.615006	42.567974	441	-76.902121	42.505713	442	-76.890751	42.660462
483	-76.702899	42.688656	442	-76.615235	42.568119	442	-76.902190	42.505481	443	-76.890800	42.660239
484	-76.702739	42.688468	443	-76.615480	42.568268	443	-76.902257	42.505265	444	-76.890843	42.660016
485	-76.702577	42.688281	444	-76.615718	42.568404	444	-76.902295	42.505047	445	-76.890878	42.659792
486	-76.702428	42.688102	445	-76.615965	42.568553	445	-76.902319	42.504810	446	-76.890902	42.659566
487	-76.702270	42.687913	446	-76.616196	42.568698	446	-76.902352	42.504591	447	-76.890917	42.659337
488	-76.702103	42.687725	447	-76.616438	42.568853	447	-76.902379	42.504373	448	-76.890934	42.659108
489	-76.701939	42.687541	448	-76.616672	42.568995	448	-76.902441	42.504159	449	-76.890953	42.658893
490	-76.701764	42.687344	449	-76.616922	42.569143	449	-76.902470	42.503935	450	-76.890965	42.658665
491	-76.701585	42.687146	450	-76.617156	42.569286	450	-76.902499	42.503744	451	-76.890973	42.658436
492	-76.701402	42.686949	451	-76.617388	42.569432	451	-76.902524	42.503551	452	-76.890985	42.658208
493	-76.701220	42.686751	452	-76.617635	42.569584	452	-76.902581	42.503351	453	-76.891006	42.657980
494	-76.701038	42.686553	453	-76.617872	42.569727	453	-76.902649	42.503131	454	-76.891023	42.657752
495	-76.700855	42.686354	454	-76.618114	42.569866	454	-76.902711	42.502921	455	-76.891040	42.657522
496	-76.700686	42.686166	455	-76.618354	42.570007	455	-76.902780	42.502716	456	-76.891069	42.657295
497	-76.700508	42.685968	456	-76.618605	42.570157	456	-76.902838	42.502499	457	-76.891099	42.657066
498	-76.700326	42.685771	457	-76.618842	42.570300	457	-76.902862	42.502289	458	-76.891125	42.656846
499	-76.700153	42.685586	458	-76.619080	42.570442	458	-76.902863	42.502062	459	-76.891156	42.656613
500	-76.699971	42.685388	459	-76.619318	42.570584	459	-76.902857	42.501835	460	-76.891192	42.656385
501	-76.699804	42.685198	460	-76.619567	42.570735	460	-76.902857	42.501620	461	-76.891224	42.656156
502	-76.699621	42.684999	461	-76.619803	42.570879	461	-76.902857	42.501386	462	-76.891256	42.655925
503	-76.699449	42.684810	462	-76.620041	42.571020	462	-76.902852	42.501149	463	-76.891285	42.655707
504	-76.699269	42.684608	463	-76.620280	42.571159	463	-76.902849	42.500914	464	-76.891312	42.655474
505	-76.699097	42.684420	464	-76.620520	42.571298	464	-76.902862	42.500679	465	-76.891341	42.655242
506	-76.698924	42.684234	465	-76.620760	42.571436	465	-76.902874	42.500450	466	-76.891363	42.655023
507	-76.698748	42.684049	466	-76.621001	42.571572	466	-76.902878	42.500232	467	-76.891385	42.654789
508	-76.698561	42.683854	467	-76.621242	42.571709	467	-76.902899	42.499997	468	-76.891417	42.654555
509	-76.698382	42.683672	468	-76.621484	42.571846	468	-76.902909	42.499763	469	-76.891452	42.654335
510	-76.698205	42.683490	469	-76.621726	42.571982	469	-76.902897	42.499531	470	-76.891489	42.654103

511	-76.698031	42.683306	470	-76.621969	42.572116	470	-76.902872	42.499311	471	-76.891514	42.653883
512	-76.697862	42.683118	471	-76.622214	42.572249	471	-76.902862	42.499075	472	-76.891540	42.653652
513	-76.697696	42.682929	472	-76.622458	42.572384	472	-76.902783	42.498853	473	-76.891565	42.653435
514	-76.697532	42.682739	473	-76.622700	42.572522	473	-76.902708	42.498643	474	-76.891588	42.653204
515	-76.697368	42.682549	474	-76.622941	42.572662	474	-76.902616	42.498419	475	-76.891610	42.652987
516	-76.697204	42.682361	475	-76.623186	42.572802	475	-76.902519	42.498210	476	-76.891632	42.652756
517	-76.697036	42.682177	476	-76.623430	42.572944	476	-76.902426	42.497988	477	-76.891653	42.652540
518	-76.696865	42.681994	477	-76.623671	42.573089	477	-76.902344	42.497763	478	-76.891674	42.652312
519	-76.696695	42.681810	478	-76.623909	42.573237	478	-76.902291	42.497544	479	-76.891699	42.652095
520	-76.696525	42.681629	479	-76.624147	42.573383	479	-76.902235	42.497312	480	-76.891726	42.651865
521	-76.696357	42.681447	480	-76.624387	42.573528	480	-76.902189	42.497098	481	-76.891744	42.651647
522	-76.696191	42.681265	481	-76.624629	42.573672	481	-76.902125	42.496871	482	-76.891758	42.651429
523	-76.696031	42.681081	482	-76.624866	42.573820	482	-76.902062	42.496663	483	-76.891771	42.651198
524	-76.695872	42.680895	483	-76.625099	42.573973	483	-76.901996	42.496440	484	-76.891785	42.650981
525	-76.695696	42.680701	484	-76.625328	42.574127	484	-76.901939	42.496225	485	-76.891802	42.650749
526	-76.695527	42.680510	485	-76.625561	42.574278	485	-76.901870	42.496023	486	-76.891818	42.650530
527	-76.695365	42.680315	486	-76.625799	42.574428	486	-76.901808	42.495814	487	-76.891828	42.650298
528	-76.695190	42.680111	487	-76.626038	42.574578	487	-76.901750	42.495620	488	-76.891840	42.650078
529	-76.695021	42.679918	488	-76.626265	42.574717	488	-76.901699	42.495416	489	-76.891859	42.649845
530	-76.694858	42.679724	489	-76.626508	42.574861	489	-76.901639	42.495227	490	-76.891875	42.649625
531	-76.694697	42.679527	490	-76.626750	42.575006	490	-76.901573	42.495023	491	-76.891891	42.649392
532	-76.694539	42.679330	491	-76.626993	42.575148	491	-76.901513	42.494832	492	-76.891912	42.649172
533	-76.694378	42.679136	492	-76.627237	42.575290	492	-76.901437	42.494626	493	-76.891943	42.648938
534	-76.694220	42.678939	493	-76.627468	42.575423	493	-76.901384	42.494418	494	-76.891975	42.648718
535	-76.694058	42.678741	494	-76.627710	42.575567	494	-76.901326	42.494218	495	-76.892002	42.648482
536	-76.693893	42.678542	495	-76.627951	42.575711	495	-76.901269	42.494031	496	-76.892030	42.648258
537	-76.693726	42.678341	496	-76.628181	42.575844	496	-76.901216	42.493850	497	-76.892055	42.648020
538	-76.693564	42.678138	497	-76.628424	42.575985	497	-76.901176	42.493676	498	-76.892082	42.647794
539	-76.693401	42.677934	498	-76.628667	42.576128	498	-76.901120	42.493501	499	-76.892114	42.647569
540	-76.693240	42.677730	499	-76.628893	42.576264	499	-76.901058	42.493315	500	-76.892150	42.647333
541	-76.693079	42.677527	500	-76.629129	42.576411	500	-76.901000	42.493140	501	-76.892180	42.647110
542	-76.692927	42.677336	501	-76.629374	42.576550	501	-76.900940	42.492958	502	-76.892204	42.646886
543	-76.692754	42.677133	502	-76.629607	42.576679	502	-76.900873	42.492787	503	-76.892226	42.646647
544	-76.692571	42.676927	503	-76.629853	42.576817	503	-76.900819	42.492626	504	-76.892251	42.646421
545	-76.692378	42.676723	504	-76.630097	42.576957	504	-76.900770	42.492460	505	-76.892281	42.646195
546	-76.692188	42.676534	505	-76.630341	42.577097	505	-76.900710	42.492284	506	-76.892318	42.645971
547	-76.691979	42.676335	506	-76.630570	42.577233	506	-76.900664	42.492118	507	-76.892349	42.645733
548	-76.691787	42.676145	507	-76.630813	42.577376	507	-76.900602	42.491940	508	-76.892387	42.645509
549	-76.691592	42.675940	508	-76.631058	42.577518	508	-76.900537	42.491747	509	-76.892426	42.645286
550	-76.691407	42.675749	509	-76.631293	42.577648	509	-76.900485	42.491561	510	-76.892454	42.645062
551	-76.691222	42.675557	510	-76.631544	42.577783	510	-76.900441	42.491367	511	-76.892490	42.644838
552	-76.691033	42.675348	511	-76.631792	42.577921	511	-76.900401	42.491181	512	-76.892527	42.644613
553	-76.690858	42.675149	512	-76.632025	42.578052	512	-76.900367	42.490992	513	-76.892561	42.644389
554	-76.690682	42.674950	513	-76.632270	42.578193	513	-76.900301	42.490803	514	-76.892596	42.644165
555	-76.690501	42.674754	514	-76.632516	42.578335	514	-76.900231	42.490621	515	-76.892633	42.643943
556	-76.690317	42.674558	515	-76.632759	42.578477	515	-76.900145	42.490427	516	-76.892659	42.643720
557	-76.690147	42.674374	516	-76.632989	42.578612	516	-76.900048	42.490251	517	-76.892686	42.643497
558	-76.689970	42.674175	517	-76.633231	42.578754	517	-76.899987	42.490066	518	-76.892720	42.643275
559	-76.689794	42.673975	518	-76.633477	42.578893	518	-76.899942	42.489871	519	-76.892755	42.643052
560	-76.689628	42.673791	519	-76.633714	42.579021	519	-76.899887	42.489675	520	-76.892787	42.642829
561	-76.689449	42.673594	520	-76.633969	42.579154	520	-76.899840	42.489475	521	-76.892810	42.642605
562	-76.689269	42.673396	521	-76.634227	42.579284	521	-76.899778	42.489274	522	-76.892833	42.642381
563	-76.689098	42.673210	522	-76.634474	42.579406	522	-76.899705	42.489071	523	-76.892863	42.642158
564	-76.688927	42.673024	523	-76.634736	42.579533	523	-76.899658	42.488862	524	-76.892893	42.641935
565	-76.688743	42.672824	524	-76.635001	42.579658	524	-76.899606	42.488651	525	-76.892918	42.641712
566	-76.688570	42.672640	525	-76.635250	42.579776	525	-76.899556	42.488433	526	-76.892938	42.641489
567	-76.688387	42.672446	526	-76.635514	42.579902	526	-76.899489	42.488221	527	-76.892952	42.641266
568	-76.688219	42.672269	527	-76.635777	42.580030	527	-76.899409	42.488009	528	-76.892961	42.641043
569	-76.688056	42.672092	528	-76.636025	42.580153	528	-76.899329	42.487795	529	-76.892977	42.640821

570	-76.687892	42.671902	529	-76.636284	42.580287	529	-76.899262	42.487566	530	-76.892999	42.640600
571	-76.687739	42.671724	530	-76.636534	42.580428	530	-76.899185	42.487351	531	-76.893020	42.640380
572	-76.687585	42.671546	531	-76.636762	42.580569	531	-76.899154	42.487131	532	-76.893046	42.640159
573	-76.687429	42.671368	532	-76.637000	42.580718	532	-76.899125	42.486898	533	-76.893075	42.639945
574	-76.687259	42.671178	533	-76.637228	42.580857	533	-76.899103	42.486670	534	-76.893094	42.639717
575	-76.687097	42.671002	534	-76.637471	42.581002	534	-76.899104	42.486435	535	-76.893119	42.639497
576	-76.686930	42.670826	535	-76.637701	42.581139	535	-76.899072	42.486219	536	-76.893150	42.639278
577	-76.686750	42.670639	536	-76.637945	42.581283	536	-76.899015	42.486001	537	-76.893176	42.639057
578	-76.686581	42.670463	537	-76.638172	42.581421	537	-76.898934	42.485794	538	-76.893203	42.638822
579	-76.686399	42.670277	538	-76.638411	42.581569	538	-76.898827	42.485587	539	-76.893229	42.638600
580	-76.686231	42.670101	539	-76.638637	42.581709	539	-76.898746	42.485359	540	-76.893253	42.638376
581	-76.686058	42.669912	540	-76.638875	42.581859	540	-76.898698	42.485138	541	-76.893278	42.638153
582	-76.685895	42.669735	541	-76.639109	42.582011	541	-76.898617	42.484929	542	-76.893303	42.637930
583	-76.685719	42.669546	542	-76.639333	42.582153	542	-76.898480	42.484717	543	-76.893327	42.637708
584	-76.685552	42.669371	543	-76.639572	42.582302	543	-76.898347	42.484502	544	-76.893350	42.637486
585	-76.685371	42.669186	544	-76.639799	42.582442	544	-76.898293	42.484296	545	-76.893373	42.637251
586	-76.685190	42.669001	545	-76.640042	42.582588	545	-76.898234	42.484080	546	-76.893395	42.637028
587	-76.685019	42.668828	546	-76.640272	42.582727	546	-76.898164	42.483866	547	-76.893413	42.636806
588	-76.684836	42.668643	547	-76.640512	42.582879	547	-76.898093	42.483631	548	-76.893428	42.636584
589	-76.684664	42.668470	548	-76.640736	42.583024	548	-76.898079	42.483407	549	-76.893450	42.636364
590	-76.684476	42.668286	549	-76.640972	42.583178	549	-76.898159	42.483166	550	-76.893477	42.636143
591	-76.684290	42.668101	550	-76.641198	42.583322	550	-76.898276	42.482948	551	-76.893504	42.635922
592	-76.684106	42.667914	551	-76.641439	42.583470	551	-76.898296	42.482732	552	-76.893534	42.635687
593	-76.683933	42.667739	552	-76.641668	42.583609	552	-76.898212	42.482530	553	-76.893561	42.635471
594	-76.683749	42.667554	553	-76.641912	42.583755	553	-76.898104	42.482332	554	-76.893579	42.635241
595	-76.683564	42.667370	554	-76.642144	42.583893	554	-76.898054	42.482097	555	-76.893602	42.635019
596	-76.683396	42.667193	555	-76.642390	42.584038	555	-76.898048	42.481864	556	-76.893622	42.634796
597	-76.683237	42.666996	556	-76.642623	42.584176	556	-76.898017	42.481637	557	-76.893647	42.634574
598	-76.683101	42.666791	557	-76.642866	42.584325	557	-76.897988	42.481416	558	-76.893673	42.634352
599	-76.682988	42.666593	558	-76.643093	42.584469	558	-76.897950	42.481201	559	-76.893704	42.634116
600	-76.682875	42.666380	559	-76.643331	42.584624	559	-76.897910	42.480978	560	-76.893729	42.633897
601	-76.682763	42.666165	560	-76.643554	42.584772	560	-76.897850	42.480757	561	-76.893748	42.633670
602	-76.682662	42.665965	561	-76.643788	42.584933	561	-76.897733	42.480559	562	-76.893766	42.633447
603	-76.682555	42.665751	562	-76.643996	42.585094	562	-76.897621	42.480345	563	-76.893779	42.633224
604	-76.682445	42.665538	563	-76.644201	42.585276	563	-76.897531	42.480137	564	-76.893783	42.633001
605	-76.682348	42.665336	564	-76.644379	42.585455	564	-76.897492	42.479906	565	-76.893777	42.632778
606	-76.682248	42.665120	565	-76.644543	42.585641	565	-76.897497	42.479679	566	-76.893762	42.632540
607	-76.682142	42.664907	566	-76.644702	42.585844	566	-76.897435	42.479449	567	-76.893748	42.632320
608	-76.682037	42.664708	567	-76.644842	42.586041	567	-76.897319	42.479239	568	-76.893738	42.632090
609	-76.681918	42.664498	568	-76.644985	42.586252	568	-76.897204	42.479016	569	-76.893733	42.631866
610	-76.681796	42.664288	569	-76.645114	42.586453	569	-76.897144	42.478794	570	-76.893732	42.631642
611	-76.681691	42.664088	570	-76.645237	42.586654	570	-76.897066	42.478579	571	-76.893735	42.631418
612	-76.681583	42.663874	571	-76.645363	42.586867	571	-76.896990	42.478360	572	-76.893736	42.631193
613	-76.681473	42.663661	572	-76.645484	42.587067	572	-76.896938	42.478146	573	-76.893736	42.630975
614	-76.681364	42.663448	573	-76.645605	42.587268	573	-76.896865	42.477928	574	-76.893735	42.630752
615	-76.681266	42.663250	574	-76.645733	42.587480	574	-76.896747	42.477725	575	-76.893736	42.630510
616	-76.681167	42.663036	575	-76.645853	42.587681	575	-76.896637	42.477509	576	-76.893742	42.630288
617	-76.681076	42.662820	576	-76.645972	42.587882	576	-76.896557	42.477294	577	-76.893750	42.630066
618	-76.680994	42.662604	577	-76.646087	42.588085	577	-76.896452	42.477073	578	-76.893760	42.629845
619	-76.680908	42.662406	578	-76.646206	42.588300	578	-76.896312	42.476878	579	-76.893773	42.629623
620	-76.680808	42.662198	579	-76.646323	42.588502	579	-76.896143	42.476681	580	-76.893789	42.629407
621	-76.680700	42.661995	580	-76.646440	42.588705	580	-76.895997	42.476490	581	-76.893803	42.629185
622	-76.680584	42.661796	581	-76.646561	42.588921	581	-76.895865	42.476278	582	-76.893814	42.628957
623	-76.680472	42.661609	582	-76.646676	42.589125	582	-76.895749	42.476069	583	-76.893831	42.628735
624	-76.680354	42.661410	583	-76.646788	42.589330	583	-76.895673	42.475847	584	-76.893850	42.628516
625	-76.680236	42.661211	584	-76.646905	42.589548	584	-76.895575	42.475641	585	-76.893872	42.628292
626	-76.680120	42.661012	585	-76.647013	42.589754	585	-76.895426	42.475444	586	-76.893901	42.628068
627	-76.680007	42.660812	586	-76.647119	42.589961	586	-76.895279	42.475253	587	-76.893938	42.627832
628	-76.679895	42.660611	587	-76.647230	42.590181	587	-76.895168	42.475039	588	-76.893978	42.627610

629	-76.679789	42.660409	588	-76.647330	42.590390	588	-76.895066	42.474826	589	-76.894013	42.627392
630	-76.679687	42.660204	589	-76.647431	42.590600	589	-76.894961	42.474612	590	-76.894034	42.627170
631	-76.679594	42.659998	590	-76.647536	42.590821	590	-76.894838	42.474387	591	-76.894040	42.626948
632	-76.679503	42.659791	591	-76.647639	42.591030	591	-76.894724	42.474171	592	-76.894033	42.626726
633	-76.679411	42.659586	592	-76.647742	42.591239	592	-76.894600	42.473955	593	-76.894015	42.626504
634	-76.679311	42.659368	593	-76.647851	42.591459	593	-76.894509	42.473746	594	-76.893990	42.626268
635	-76.679211	42.659164	594	-76.647954	42.591669	594	-76.894427	42.473521	595	-76.893962	42.626045
636	-76.679108	42.658960	595	-76.648054	42.591880	595	-76.894340	42.473305	596	-76.893940	42.625821
637	-76.679001	42.658741	596	-76.648154	42.592104	596	-76.894232	42.473078	597	-76.893923	42.625598
638	-76.678896	42.658537	597	-76.648246	42.592317	597	-76.894130	42.472859	598	-76.893909	42.625374
639	-76.678785	42.658333	598	-76.648338	42.592529	598	-76.894021	42.472636	599	-76.893898	42.625151
640	-76.678667	42.658114	599	-76.648428	42.592742	599	-76.893935	42.472408	600	-76.893889	42.624927
641	-76.678554	42.657907	600	-76.648523	42.592969	600	-76.893828	42.472187	601	-76.893883	42.624693
642	-76.678431	42.657689	601	-76.648613	42.593182	601	-76.893742	42.471958	602	-76.893873	42.624471
643	-76.678313	42.657485	602	-76.648705	42.593395	602	-76.893674	42.471739	603	-76.893862	42.624249
644	-76.678196	42.657281	603	-76.648799	42.593608	603	-76.893620	42.471519	604	-76.893852	42.624028
645	-76.678068	42.657064	604	-76.648894	42.593820	604	-76.893566	42.471308	605	-76.893837	42.623808
646	-76.677948	42.656859	605	-76.648997	42.594044	605	-76.893517	42.471109	606	-76.893815	42.623587
647	-76.677824	42.656641	606	-76.649092	42.594255	606	-76.893443	42.470903	607	-76.893799	42.623368
648	-76.677712	42.656433	607	-76.649188	42.594466	607	-76.893391	42.470688	608	-76.893789	42.623152
649	-76.677605	42.656228	608	-76.649293	42.594675	608	-76.893340	42.470476	609	-76.893780	42.622931
650	-76.677497	42.656015	609	-76.649405	42.594882	609	-76.893274	42.470265	610	-76.893778	42.622697
651	-76.677393	42.655818	610	-76.649511	42.595091	610	-76.893196	42.470063	611	-76.893789	42.622477
652	-76.677290	42.655622	611	-76.649618	42.595312	611	-76.893097	42.469850	612	-76.893812	42.622258
653	-76.677180	42.655416	612	-76.649717	42.595520	612	-76.892997	42.469635	613	-76.893822	42.622039
654	-76.677073	42.655222	613	-76.649814	42.595729	613	-76.892874	42.469423	614	-76.893811	42.621820
655	-76.676968	42.655030	614	-76.649907	42.595938	614	-76.892777	42.469209	615	-76.893805	42.621589
656	-76.676862	42.654838	615	-76.650000	42.596147	615	-76.892675	42.469003	616	-76.893809	42.621372
657	-76.676750	42.654634	616	-76.650096	42.596356	616	-76.892568	42.468791	617	-76.893823	42.621154
658	-76.676645	42.654443	617	-76.650198	42.596564	617	-76.892475	42.468580	618	-76.893847	42.620937
659	-76.676534	42.654239	618	-76.650307	42.596784	618	-76.892353	42.468390	619	-76.893878	42.620707
660	-76.676433	42.654046	619	-76.650408	42.596992	619	-76.892276	42.468188	620	-76.893901	42.620490
661	-76.676329	42.653840	620	-76.650508	42.597201	620	-76.892206	42.467977	621	-76.893908	42.620273
662	-76.676227	42.653633	621	-76.650608	42.597409	621	-76.892112	42.467782	622	-76.893898	42.620043
663	-76.676133	42.653438	622	-76.650707	42.597618	622	-76.892024	42.467585	623	-76.893865	42.619826
664	-76.676033	42.653231	623	-76.650813	42.597845	623	-76.891945	42.467395	624	-76.893819	42.619608
665	-76.675938	42.653023	624	-76.650915	42.598054	624	-76.891858	42.467187	625	-76.893793	42.619375
666	-76.675842	42.652817	625	-76.651016	42.598263	625	-76.891747	42.466992	626	-76.893805	42.619157
667	-76.675748	42.652610	626	-76.651117	42.598471	626	-76.891633	42.466779	627	-76.893832	42.618929
668	-76.675665	42.652404	627	-76.651236	42.598687	627	-76.891529	42.466560	628	-76.893859	42.618714
669	-76.675568	42.652198	628	-76.651346	42.598890	628	-76.891430	42.466354	629	-76.893888	42.618497
670	-76.675463	42.651992	629	-76.651449	42.599095	629	-76.891330	42.466141	630	-76.893913	42.618267
671	-76.675348	42.651786	630	-76.651546	42.599299	630	-76.891226	42.465915	631	-76.893931	42.618048
672	-76.675233	42.651579	631	-76.651641	42.599504	631	-76.891119	42.465679	632	-76.893948	42.617814
673	-76.675114	42.651379	632	-76.651739	42.599724	632	-76.891044	42.465446	633	-76.893960	42.617592
674	-76.674992	42.651174	633	-76.651828	42.599932	633	-76.891029	42.465204	634	-76.893966	42.617357
675	-76.674883	42.650984	634	-76.651913	42.600140	634	-76.891054	42.464960	635	-76.893976	42.617136
676	-76.674774	42.650794	635	-76.651992	42.600348	635	-76.891081	42.464729	636	-76.894000	42.616902
677	-76.674658	42.650605	636	-76.652072	42.600569	636	-76.891067	42.464507	637	-76.894032	42.616684
678	-76.674535	42.650404	637	-76.652146	42.600778	637	-76.890981	42.464301	638	-76.894067	42.616453
679	-76.674427	42.650210	638	-76.652219	42.600988	638	-76.890876	42.464084	639	-76.894091	42.616235
680	-76.674326	42.650015	639	-76.652296	42.601211	639	-76.890751	42.463874	640	-76.894103	42.616017
681	-76.674218	42.649808	640	-76.652364	42.601422	640	-76.890644	42.463675	641	-76.894109	42.615784
682	-76.674111	42.649614	641	-76.652435	42.601632	641	-76.890567	42.463467	642	-76.894122	42.615564
683	-76.673994	42.649410	642	-76.652514	42.601856	642	-76.890472	42.463242	643	-76.894136	42.615330
684	-76.673876	42.649205	643	-76.652585	42.602068	643	-76.890376	42.463027	644	-76.894142	42.615110
685	-76.673771	42.649010	644	-76.652658	42.602292	644	-76.890330	42.462799	645	-76.894149	42.614891
686	-76.673665	42.648800	645	-76.652723	42.602503	645	-76.890363	42.462567	646	-76.894156	42.614658
687	-76.673558	42.648592	646	-76.652785	42.602726	646	-76.890484	42.462351	647	-76.894156	42.614437

688	-76.673449	42.648383	647	-76.652837	42.602938	647	-76.890666	42.462146	648	-76.894158	42.614201
689	-76.673340	42.648175	648	-76.652873	42.603132	648	-76.890755	42.461951	649	-76.894163	42.613978
690	-76.673230	42.647967	649	-76.652916	42.603343	649	-76.890742	42.461745	650	-76.894174	42.613755
691	-76.673121	42.647761	650	-76.652974	42.603565	650	-76.890687	42.461537	651	-76.894196	42.613521
692	-76.673008	42.647558	651	-76.653042	42.603773	651	-76.890672	42.461297	652	-76.894215	42.613302
693	-76.672891	42.647356	652	-76.653118	42.603993	652	-76.890680	42.461067	653	-76.894231	42.613068
694	-76.672777	42.647153	653	-76.653209	42.604246	653	-76.890659	42.460835	654	-76.894241	42.612848
695	-76.672662	42.646949	654	-76.653288	42.604454	654	-76.890601	42.460614	655	-76.894248	42.612626
696	-76.672546	42.646745	655	-76.653363	42.604639	655	-76.890537	42.460408	656	-76.894262	42.612390
697	-76.672431	42.646540	656	-76.653450	42.604856	656	-76.890465	42.460185	657	-76.894281	42.612167
698	-76.672321	42.646332	657	-76.653544	42.605072	657	-76.890390	42.459972	658	-76.894298	42.611945
699	-76.672213	42.646124	658	-76.653642	42.605276	658	-76.890353	42.459744	659	-76.894314	42.611724
700	-76.672096	42.645921	659	-76.653755	42.605490	659	-76.890305	42.459522	660	-76.894337	42.611491
701	-76.671975	42.645720	660	-76.653893	42.605744	660	-76.890192	42.459316	661	-76.894359	42.611271
702	-76.671859	42.645517	661	-76.654009	42.605959	661	-76.890070	42.459096	662	-76.894377	42.611050
703	-76.671749	42.645313	662	-76.654082	42.606124	662	-76.890000	42.458861	663	-76.894396	42.610815
704	-76.671631	42.645097	663	-76.654148	42.606345	663	-76.889964	42.458616	664	-76.894409	42.610593
705	-76.671518	42.644893	664	-76.654188	42.606568	664	-76.889931	42.458381	665	-76.894418	42.610369
706	-76.671402	42.644691	665	-76.654210	42.606789	665	-76.889912	42.458146	666	-76.894429	42.610146
707	-76.671280	42.644490	666	-76.654266	42.606988	666	-76.889900	42.457916	667	-76.894431	42.609910
708	-76.671161	42.644288	667	-76.654387	42.607248	667	-76.889896	42.457685	668	-76.894443	42.609688
709	-76.671041	42.644074	668	-76.654487	42.607456	668	-76.889909	42.457459	669	-76.894463	42.609466
710	-76.670928	42.643869	669	-76.654567	42.607612	669	-76.889891	42.457223	670	-76.894484	42.609243
711	-76.670818	42.643664	670	-76.654661	42.607811	670	-76.889839	42.457003	671	-76.894499	42.609005
712	-76.670708	42.643460	671	-76.654762	42.608024	671	-76.889802	42.456783	672	-76.894510	42.608779
713	-76.670588	42.643247	672	-76.654871	42.608236	672	-76.889753	42.456560	673	-76.894520	42.608553
714	-76.670473	42.643045	673	-76.654975	42.608450	673	-76.889638	42.456366	674	-76.894533	42.608327
715	-76.670356	42.642844	674	-76.655079	42.608666	674	-76.889513	42.456165	675	-76.894556	42.608102
716	-76.670231	42.642630	675	-76.655201	42.608947	675	-76.889465	42.455937	676	-76.894583	42.607867
717	-76.670109	42.642430	676	-76.655281	42.609098	676	-76.889479	42.455697	677	-76.894601	42.607644
718	-76.669992	42.642228	677	-76.655394	42.609309	677	-76.889476	42.455475	678	-76.894618	42.607420
719	-76.669868	42.642017	678	-76.655509	42.609519	678	-76.889459	42.455255	679	-76.894637	42.607196
720	-76.669753	42.641818	679	-76.655613	42.609731	679	-76.889446	42.455041	680	-76.894647	42.606971
721	-76.669643	42.641621	680	-76.655724	42.609940	680	-76.889439	42.454817	681	-76.894654	42.606745
722	-76.669535	42.641412	681	-76.655838	42.610149	681	-76.889485	42.454601	682	-76.894664	42.606521
723	-76.669436	42.641214	682	-76.655983	42.610427	682	-76.889461	42.454390	683	-76.894677	42.606295
724	-76.669341	42.641015	683	-76.656075	42.610570	683	-76.889403	42.454166	684	-76.894692	42.606070
725	-76.669242	42.640806	684	-76.656181	42.610776	684	-76.889361	42.453949	685	-76.894703	42.605844
726	-76.669146	42.640610	685	-76.656297	42.610977	685	-76.889328	42.453737	686	-76.894714	42.605604
727	-76.669041	42.640405	686	-76.656416	42.611180	686	-76.889325	42.453510	687	-76.894729	42.605378
728	-76.668936	42.640212	687	-76.656518	42.611374	687	-76.889313	42.453301	688	-76.894748	42.605150
729	-76.668822	42.640011	688	-76.656632	42.611580	688	-76.889312	42.453082	689	-76.894764	42.604923
730	-76.668715	42.639820	689	-76.656765	42.611824	689	-76.889292	42.452875	690	-76.894776	42.604696
731	-76.668600	42.639617	690	-76.656878	42.611991	690	-76.889252	42.452659	691	-76.894787	42.604469
732	-76.668492	42.639412	691	-76.656998	42.612198	691	-76.889207	42.452438	692	-76.894795	42.604243
733	-76.668385	42.639209	692	-76.657112	42.612405	692	-76.889183	42.452217	693	-76.894800	42.604017
734	-76.668280	42.639018	693	-76.657226	42.612611	693	-76.889168	42.451989	694	-76.894809	42.603789
735	-76.668166	42.638817	694	-76.657343	42.612816	694	-76.889183	42.451761	695	-76.894818	42.603562
736	-76.668059	42.638611	695	-76.657459	42.613021	695	-76.889189	42.451534	696	-76.894821	42.603349
737	-76.667960	42.638404	696	-76.657588	42.613261	696	-76.889162	42.451309	697	-76.894827	42.603123
738	-76.667856	42.638198	697	-76.657700	42.613468	697	-76.889130	42.451083	698	-76.894837	42.602897
739	-76.667747	42.637978	698	-76.657803	42.613648	698	-76.889101	42.450859	699	-76.894842	42.602672
740	-76.667644	42.637770	699	-76.657936	42.613863	699	-76.889103	42.450628	700	-76.894848	42.602446
741	-76.667531	42.637566	700	-76.658050	42.614071	700	-76.889112	42.450400	701	-76.894851	42.602219
742	-76.667416	42.637366	701	-76.658170	42.614278	701	-76.889105	42.450173	702	-76.894851	42.601991
743	-76.667293	42.637156	702	-76.658290	42.614486	702	-76.889065	42.449966	703	-76.894854	42.601761
744	-76.667174	42.636955	703	-76.658406	42.614698	703	-76.889021	42.449743	704	-76.894861	42.601533
745	-76.667059	42.636754	704	-76.658530	42.614909	704	-76.888961	42.449514	705	-76.894869	42.601305
746	-76.666948	42.636550	705	-76.658660	42.615118	705	-76.888911	42.449279	706	-76.894876	42.601091

747	-76.666831	42.636335	706	-76.658778	42.615327	706	-76.888897	42.449044	707	-76.894877	42.600866
748	-76.666720	42.636131	707	-76.658897	42.615533	707	-76.888900	42.448809	708	-76.894884	42.600640
749	-76.666604	42.635928	708	-76.659026	42.615738	708	-76.888872	42.448583	709	-76.894891	42.600416
750	-76.666471	42.635705	709	-76.659151	42.615946	709	-76.888810	42.448368	710	-76.894897	42.600191
751	-76.666366	42.635509	710	-76.659271	42.616158	710	-76.888761	42.448136	711	-76.894903	42.599967
752	-76.666260	42.635303	711	-76.659397	42.616368	711	-76.888713	42.447903	712	-76.894903	42.599742
753	-76.666149	42.635087	712	-76.659515	42.616581	712	-76.888687	42.447664	713	-76.894896	42.599530
754	-76.666043	42.634877	713	-76.659627	42.616792	713	-76.888644	42.447442	714	-76.894884	42.599304
755	-76.665938	42.634671	714	-76.659746	42.616998	714	-76.888603	42.447233	715	-76.894874	42.599079
756	-76.665830	42.634452	715	-76.659863	42.617205	715	-76.888541	42.446988	716	-76.894871	42.598855
757	-76.665727	42.634229	716	-76.659983	42.617412	716	-76.888494	42.446776	717	-76.894874	42.598633
758	-76.665639	42.634019	717	-76.660098	42.617622	717	-76.888431	42.446554	718	-76.894880	42.598409
759	-76.665540	42.633810	718	-76.660217	42.617832	718	-76.888350	42.446345	719	-76.894886	42.598184
760	-76.665441	42.633600	719	-76.660328	42.618032	719	-76.888288	42.446149	720	-76.894893	42.597973
761	-76.665339	42.633378	720	-76.660448	42.618241	720	-76.888176	42.445916	721	-76.894904	42.597748
762	-76.665236	42.633167	721	-76.660566	42.618450	721	-76.888075	42.445709	722	-76.894917	42.597523
763	-76.665118	42.632944	722	-76.660681	42.618657	722	-76.887958	42.445503	723	-76.894926	42.597299
764	-76.665002	42.632725	723	-76.660800	42.618864	723	-76.887852	42.445300	724	-76.894930	42.597074
765	-76.664898	42.632530	724	-76.660924	42.619072	724	-76.887752	42.445076	725	-76.894928	42.596851
766	-76.664789	42.632319	725	-76.661052	42.619280	725	-76.887669	42.444860	726	-76.894914	42.596625
767	-76.664674	42.632097	726	-76.661173	42.619478	726	-76.887541	42.444649	727	-76.894889	42.596398
768	-76.664557	42.631890	727	-76.661301	42.619690	727	-76.887409	42.444450	728	-76.894857	42.596172
769	-76.664440	42.631682	728	-76.661429	42.619901	728	-76.887268	42.444242	729	-76.894828	42.595945
770	-76.664317	42.631458	729	-76.661554	42.620111	729	-76.887160	42.444036	730	-76.894805	42.595718
771	-76.664210	42.631266	730	-76.661672	42.620322	730	-76.887085	42.443835	731	-76.894788	42.595492
772	-76.664083	42.631047	731	-76.661787	42.620535	731	-76.887015	42.443614	732	-76.894776	42.595265
773	-76.663964	42.630838	732	-76.661901	42.620747	732	-76.886935	42.443353	733	-76.894769	42.595037
774	-76.663847	42.630631	733	-76.662010	42.620949	733	-76.886883	42.443130	734	-76.894766	42.594810
775	-76.663728	42.630425	734	-76.662125	42.621165	734	-76.886802	42.442900	735	-76.894763	42.594583
776	-76.663594	42.630201	735	-76.662241	42.621381	735	-76.886735	42.442674	736	-76.894761	42.594356
777	-76.663475	42.629993	736	-76.662357	42.621594	736	-76.886695	42.442468	737	-76.894762	42.594129
778	-76.663371	42.629802	737	-76.662465	42.621795	737	-76.886633	42.442224	738	-76.894767	42.593916
779	-76.663260	42.629592	738	-76.662576	42.622007	738	-76.886572	42.442016	739	-76.894774	42.593689
780	-76.663145	42.629384	739	-76.662680	42.622224	739	-76.886490	42.441806	740	-76.894791	42.593463
781	-76.663032	42.629176	740	-76.662777	42.622443	740	-76.886425	42.441598	741	-76.894816	42.593238
782	-76.662918	42.628967	741	-76.662872	42.622649	741	-76.886323	42.441422	742	-76.894842	42.593011
783	-76.662793	42.628735	742	-76.662972	42.622870	742	-76.886239	42.441218	743	-76.894866	42.592784
784	-76.662694	42.628544	743	-76.663073	42.623091	743	-76.886134	42.440981	744	-76.894883	42.592557
785	-76.662587	42.628332	744	-76.663168	42.623295	744	-76.886051	42.440797	745	-76.894888	42.592330
786	-76.662481	42.628121	745	-76.663266	42.623515	745	-76.885941	42.440581	746	-76.894882	42.592117
787	-76.662368	42.627899	746	-76.663363	42.623733	746	-76.885845	42.440373	747	-76.894869	42.591890
788	-76.662258	42.627688	747	-76.663458	42.623939	747	-76.885745	42.440152	748	-76.894860	42.591663
789	-76.662134	42.627451	748	-76.663550	42.624159	748	-76.885665	42.439933	749	-76.894863	42.591436
790	-76.662033	42.627249	749	-76.663632	42.624369	749	-76.885621	42.439702	750	-76.894878	42.591210
791	-76.661946	42.627060	750	-76.663719	42.624594	750	-76.885552	42.439484	751	-76.894905	42.590984
792	-76.661847	42.626845	751	-76.663806	42.624820	751	-76.885470	42.439255	752	-76.894931	42.590773
793	-76.661746	42.626631	752	-76.663890	42.625033	752	-76.885382	42.439028	753	-76.894952	42.590549
794	-76.661639	42.626416	753	-76.663983	42.625256	753	-76.885329	42.438819	754	-76.894968	42.590327
795	-76.661538	42.626200	754	-76.664074	42.625465	754	-76.885278	42.438605	755	-76.894979	42.590107
796	-76.661419	42.625956	755	-76.664176	42.625684	755	-76.885221	42.438399	756	-76.894986	42.589889
797	-76.661309	42.625740	756	-76.664288	42.625900	756	-76.885189	42.438182	757	-76.894988	42.589673
798	-76.661200	42.625525	757	-76.664397	42.626103	757	-76.885152	42.437982	758	-76.894984	42.589472
799	-76.661100	42.625339	758	-76.664512	42.626320	758	-76.885103	42.437778	759	-76.894970	42.589261
800	-76.660988	42.625125	759	-76.664625	42.626525	759	-76.885025	42.437566	760	-76.894953	42.589039
801	-76.660880	42.624912	760	-76.664737	42.626731	760	-76.884961	42.437344	761	-76.894929	42.588831
802	-76.660757	42.624683	761	-76.664855	42.626947	761	-76.884898	42.437130	762	-76.894906	42.588624
803	-76.660640	42.624471	762	-76.664974	42.627149	762	-76.884857	42.436910	763	-76.894880	42.588416
804	-76.660519	42.624258	763	-76.665096	42.627363	763	-76.884827	42.436705	764	-76.894858	42.588207
805	-76.660423	42.624086	764	-76.665214	42.627565	764	-76.884793	42.436513	765	-76.894844	42.587963

806	-76.660304	42.623875	765	-76.665346	42.627776	765	-76.884768	42.436297	766	-76.894825	42.587740
807	-76.660182	42.623665	766	-76.665468	42.627978	766	-76.884712	42.436077	767	-76.894806	42.587558
808	-76.660061	42.623454	767	-76.665597	42.628191	767	-76.884667	42.435836	768	-76.894809	42.587344
809	-76.659932	42.623225	768	-76.665723	42.628386	768	-76.884619	42.435622	769	-76.894825	42.587116
810	-76.659818	42.623012	769	-76.665849	42.628585	769	-76.884578	42.435405	770	-76.894844	42.586901
811	-76.659712	42.622797	770	-76.665977	42.628803	770	-76.884539	42.435186	771	-76.894864	42.586673
812	-76.659632	42.622624	771	-76.666096	42.629004	771	-76.884497	42.434964	772	-76.894894	42.586426
813	-76.659515	42.622378	772	-76.666222	42.629216	772	-76.884468	42.434737	773	-76.894910	42.586231
814	-76.659411	42.622164	773	-76.666343	42.629415	773	-76.884440	42.434503	774	-76.894937	42.586019
815	-76.659312	42.621962	774	-76.666466	42.629615	774	-76.884403	42.434291	775	-76.894971	42.585797
816	-76.659204	42.621750	775	-76.666598	42.629826	775	-76.884389	42.434084	776	-76.895001	42.585580
817	-76.659091	42.621544	776	-76.666721	42.630025	776	-76.884350	42.433838	777	-76.895039	42.585362
818	-76.658979	42.621350	777	-76.666852	42.630232	777	-76.884300	42.433618	778	-76.895085	42.585123
819	-76.658867	42.621146	778	-76.666976	42.630429	778	-76.884233	42.433397	779	-76.895129	42.584905
820	-76.658765	42.620951	779	-76.667098	42.630631	779	-76.884159	42.433174	780	-76.895167	42.584719
821	-76.658661	42.620742	780	-76.667229	42.630840	780	-76.884116	42.432961	781	-76.895212	42.584501
822	-76.658553	42.620534	781	-76.667349	42.631038	781	-76.884086	42.432752	782	-76.895250	42.584292
823	-76.658451	42.620337	782	-76.667473	42.631249	782	-76.884028	42.432539	783	-76.895289	42.584073
824	-76.658349	42.620127	783	-76.667589	42.631449	783	-76.883963	42.432326	784	-76.895329	42.583854
825	-76.658246	42.619918	784	-76.667705	42.631649				785	-76.895371	42.583635
826	-76.658129	42.619711	785	-76.667826	42.631862				786	-76.895416	42.583415
827	-76.658018	42.619515	786	-76.667941	42.632061				787	-76.895455	42.583192
828	-76.657894	42.619310	787	-76.668066	42.632271				788	-76.895487	42.582966
829	-76.657765	42.619106	788	-76.668190	42.632469				789	-76.895511	42.582739
830	-76.657638	42.618900	789	-76.668317	42.632681				790	-76.895520	42.582511
831	-76.657510	42.618696	790	-76.668426	42.632883				791	-76.895515	42.582276
832	-76.657383	42.618490	791	-76.668535	42.633099				792	-76.895502	42.582050
833	-76.657270	42.618315	792	-76.668631	42.633336				793	-76.895490	42.581809
834	-76.657140	42.618110	793	-76.668744	42.633549				794	-76.895484	42.581583
835	-76.657011	42.617906	794	-76.668848	42.633751				795	-76.895501	42.581360
836	-76.656892	42.617699	795	-76.668959	42.633964				796	-76.895533	42.581138
837	-76.656780	42.617490	796	-76.669070	42.634163				797	-76.895585	42.580916
838	-76.656667	42.617281	797	-76.669192	42.634373				798	-76.895656	42.580698
839	-76.656544	42.617038	798	-76.669307	42.634572				799	-76.895740	42.580483
840	-76.656435	42.616828	799	-76.669425	42.634771				800	-76.895836	42.580271
841	-76.656335	42.616640	800	-76.669551	42.634982				801	-76.895928	42.580060
842	-76.656232	42.616429	801	-76.669665	42.635184				802	-76.895985	42.579840
843	-76.656134	42.616216	802	-76.669786	42.635400				803	-76.896020	42.579628
844	-76.656045	42.616010	803	-76.669900	42.635603				804	-76.896043	42.579400
845	-76.655932	42.615766	804	-76.670023	42.635816				805	-76.896066	42.579171
846	-76.655821	42.615558	805	-76.670142	42.636015				806	-76.896083	42.578943
847	-76.655713	42.615379	806	-76.670266	42.636213				807	-76.896095	42.578715
848	-76.655588	42.615174	807	-76.670400	42.636421				808	-76.896101	42.578488
849	-76.655457	42.614971	808	-76.670526	42.636618				809	-76.896102	42.578261
850	-76.655319	42.614769	809	-76.670647	42.636832				810	-76.896097	42.578020
851	-76.655181	42.614567	810	-76.670762	42.637036				811	-76.896087	42.577807
852	-76.655032	42.614336	811	-76.670887	42.637249				812	-76.896072	42.577581
853	-76.654904	42.614159	812	-76.671000	42.637453				813	-76.896063	42.577355
854	-76.654768	42.613955	813	-76.671122	42.637670				814	-76.896064	42.577130
855	-76.654636	42.613750	814	-76.671232	42.637874				815	-76.896072	42.576903
856	-76.654507	42.613545	815	-76.671349	42.638090				816	-76.896090	42.576674
857	-76.654382	42.613338	816	-76.671459	42.638293				817	-76.896109	42.576445
858	-76.654260	42.613103	817	-76.671578	42.638507				818	-76.896133	42.576216
859	-76.654157	42.612913	818	-76.671689	42.638709				819	-76.896159	42.575987
860	-76.654041	42.612701	819	-76.671811	42.638923				820	-76.896171	42.575771
861	-76.653923	42.612487	820	-76.671928	42.639125				821	-76.896175	42.575542
862	-76.653808	42.612274	821	-76.672036	42.639329				822	-76.896180	42.575312
863	-76.653694	42.612060	822	-76.672145	42.639546				823	-76.896194	42.575083
864	-76.653574	42.611825	823	-76.672252	42.639748				824	-76.896214	42.574854

865	-76.653459	42.611611	824	-76.672376	42.639960
866	-76.653352	42.611413	825	-76.672494	42.640159
867	-76.653240	42.611195	826	-76.672616	42.640372
868	-76.653127	42.610975	827	-76.672731	42.640574
869	-76.653020	42.610766	828	-76.672857	42.640789
870	-76.652907	42.610546	829	-76.672983	42.640991
871	-76.652794	42.610325	830	-76.673113	42.641191
872	-76.652684	42.610105	831	-76.673250	42.641402
873	-76.652575	42.609896	832	-76.673376	42.641601
874	-76.652466	42.609673	833	-76.673508	42.641812
875	-76.652373	42.609459	834	-76.673627	42.642013
876	-76.652279	42.609232	835	-76.673754	42.642226
877	-76.652195	42.609004	836	-76.673878	42.642428
878	-76.652106	42.608792	837	-76.674011	42.642643
879	-76.652008	42.608584	838	-76.674139	42.642849
880	-76.651888	42.608367	839	-76.674268	42.643057
881	-76.651764	42.608163	840	-76.674393	42.643282
882	-76.651628	42.607948	841	-76.674497	42.643497
883	-76.651504	42.607743	842	-76.674601	42.643710
884	-76.651382	42.607536	843	-76.674713	42.643933
885	-76.651262	42.607312	844	-76.674818	42.644140
886	-76.651148	42.607104	845	-76.674919	42.644348
887	-76.651046	42.606893	846	-76.675028	42.644565
888	-76.650946	42.606681	847	-76.675133	42.644770
889	-76.650845	42.606471	848	-76.675238	42.644975
890	-76.650726	42.606252	849	-76.675342	42.645182
891	-76.650607	42.606044	850	-76.675444	42.645390
892	-76.650483	42.605839	851	-76.675549	42.645595
893	-76.650350	42.605639	852	-76.675655	42.645800
894	-76.650209	42.605441	853	-76.675767	42.646018
895	-76.650070	42.605244	854	-76.675870	42.646226
896	-76.649934	42.605046	855	-76.675976	42.646432
897	-76.649799	42.604847	856	-76.676085	42.646638
898	-76.649656	42.604636	857	-76.676198	42.646844
899	-76.649519	42.604434	858	-76.676322	42.647060
900	-76.649380	42.604232	859	-76.676437	42.647268
901	-76.649246	42.604029	860	-76.676549	42.647477
902	-76.649121	42.603823	861	-76.676669	42.647697
903	-76.649003	42.603617	862	-76.676782	42.647906
904	-76.648890	42.603409	863	-76.676893	42.648114
905	-76.648787	42.603199	864	-76.677005	42.648323
906	-76.648686	42.602990	865	-76.677127	42.648543
907	-76.648579	42.602781	866	-76.677240	42.648752
908	-76.648468	42.602573	867	-76.677356	42.648959
909	-76.648350	42.602353	868	-76.677471	42.649165
910	-76.648230	42.602147	869	-76.677586	42.649371
911	-76.648098	42.601946	870	-76.677704	42.649589
912	-76.647956	42.601747	871	-76.677817	42.649792
913	-76.647810	42.601550	872	-76.677934	42.649995
914	-76.647662	42.601354	873	-76.678048	42.650198
915	-76.647513	42.601158	874	-76.678159	42.650401
916	-76.647371	42.600960	875	-76.678260	42.650606
917	-76.647239	42.600758	876	-76.678363	42.650811
918	-76.647122	42.600551	877	-76.678466	42.651015
919	-76.647013	42.600344	878	-76.678579	42.651229
920	-76.646909	42.600136	879	-76.678692	42.651429
921	-76.646810	42.599927	880	-76.678805	42.651630
922	-76.646719	42.599717	881	-76.678921	42.651834
923	-76.646628	42.599507	882	-76.679044	42.652036

825	-76.896240	42.574628
826	-76.896266	42.574415
827	-76.896284	42.574190
828	-76.896290	42.573963
829	-76.896286	42.573735
830	-76.896274	42.573518
831	-76.896262	42.573288
832	-76.896249	42.573057
833	-76.896246	42.572826
834	-76.896260	42.572609
835	-76.896290	42.572380
836	-76.896337	42.572154
837	-76.896375	42.571927
838	-76.896387	42.571711
839	-76.896389	42.571480
840	-76.896388	42.571248
841	-76.896381	42.571027
842	-76.896369	42.570793
843	-76.896350	42.570559
844	-76.896327	42.570339
845	-76.896297	42.570108
846	-76.896275	42.569877
847	-76.896272	42.569659
848	-76.896280	42.569428
849	-76.896281	42.569196
850	-76.896277	42.568975
851	-76.896270	42.568742
852	-76.896268	42.568521
853	-76.896273	42.568287
854	-76.896280	42.568065
855	-76.896291	42.567829
856	-76.896307	42.567605
857	-76.896327	42.567369
858	-76.896336	42.567146
859	-76.896338	42.566921
860	-76.896338	42.566682
861	-76.896340	42.566456
862	-76.896346	42.566216
863	-76.896364	42.565991
864	-76.896393	42.565767
865	-76.896426	42.565544
866	-76.896449	42.565308
867	-76.896452	42.565083
868	-76.896440	42.564856
869	-76.896435	42.564628
870	-76.896438	42.564399
871	-76.896441	42.564171
872	-76.896447	42.563929
873	-76.896454	42.563702
874	-76.896467	42.563473
875	-76.896482	42.563245
876	-76.896501	42.563017
877	-76.896519	42.562789
878	-76.896537	42.562562
879	-76.896554	42.562335
880	-76.896566	42.562106
881	-76.896575	42.561890
882	-76.896583	42.561659
883	-76.896589	42.561428

924	-76.646537	42.599297	883	-76.679162	42.652253
925	-76.646437	42.599076	884	-76.679268	42.652458
926	-76.646337	42.598868	885	-76.679378	42.652664
927	-76.646234	42.598659	886	-76.679481	42.652884
928	-76.646130	42.598450	887	-76.679576	42.653092
929	-76.646022	42.598243	888	-76.679674	42.653299
930	-76.645912	42.598037	889	-76.679781	42.653518
931	-76.645795	42.597836	890	-76.679883	42.653724
932	-76.645666	42.597625	891	-76.679995	42.653941
933	-76.645543	42.597426	892	-76.680108	42.654145
934	-76.645416	42.597229	893	-76.680218	42.654351
935	-76.645282	42.597034	894	-76.680336	42.654569
936	-76.645144	42.596842	895	-76.680449	42.654773
937	-76.644996	42.596655	896	-76.680560	42.654978
938	-76.644841	42.596458	897	-76.680675	42.655195
939	-76.644698	42.596270	898	-76.680785	42.655398
940	-76.644550	42.596084	899	-76.680897	42.655603
941	-76.644385	42.595889	900	-76.681015	42.655819
942	-76.644236	42.595701	901	-76.681126	42.656024
943	-76.644095	42.595511	902	-76.681234	42.656229
944	-76.643946	42.595309	903	-76.681346	42.656447
945	-76.643811	42.595114	904	-76.681455	42.656653
946	-76.643679	42.594903	905	-76.681567	42.656859
947	-76.643560	42.594700	906	-76.681688	42.657077
948	-76.643435	42.594486	907	-76.681806	42.657282
949	-76.643313	42.594283	908	-76.681928	42.657500
950	-76.643182	42.594068	909	-76.682036	42.657708
951	-76.643062	42.593864	910	-76.682136	42.657916
952	-76.642937	42.593649	911	-76.682234	42.658136
953	-76.642824	42.593444	912	-76.682321	42.658343
954	-76.642703	42.593226	913	-76.682405	42.658550
955	-76.642588	42.593019	914	-76.682490	42.658757
956	-76.642466	42.592813	915	-76.682579	42.658975
957	-76.642336	42.592595	916	-76.682666	42.659180
958	-76.642210	42.592391	917	-76.682762	42.659380
959	-76.642079	42.592176	918	-76.682872	42.659591
960	-76.641952	42.591975	919	-76.682977	42.659791
961	-76.641820	42.591775	920	-76.683080	42.659993
962	-76.641678	42.591564	921	-76.683190	42.660207
963	-76.641543	42.591364	922	-76.683295	42.660408
964	-76.641416	42.591160	923	-76.683417	42.660619
965	-76.641301	42.590953	924	-76.683536	42.660813
966	-76.641193	42.590733	925	-76.683666	42.661017
967	-76.641105	42.590521	926	-76.683798	42.661208
968	-76.641031	42.590309	927	-76.683944	42.661410
969	-76.640970	42.590096	928	-76.684084	42.661599
970	-76.640921	42.589882	929	-76.684216	42.661802
971	-76.640890	42.589668	930	-76.684341	42.662007
972	-76.640866	42.589441	931	-76.684458	42.662203
973	-76.640829	42.589228	932	-76.684580	42.662408
974	-76.640778	42.589016	933	-76.684706	42.662614
975	-76.640714	42.588805	934	-76.684823	42.662810
976	-76.640638	42.588583	935	-76.684945	42.663019
977	-76.640559	42.588374	936	-76.685067	42.663227
978	-76.640474	42.588165	937	-76.685186	42.663437
979	-76.640376	42.587948			
980	-76.640277	42.587742			
981	-76.640178	42.587522			
982	-76.640084	42.587313			

884	-76.896594	42.561196
885	-76.896600	42.560965
886	-76.896604	42.560733
887	-76.896607	42.560501
888	-76.896613	42.560282
889	-76.896622	42.560049
890	-76.896633	42.559816
891	-76.896646	42.559583
892	-76.896659	42.559364
893	-76.896673	42.559131
894	-76.896687	42.558899
895	-76.896701	42.558681
896	-76.896713	42.558450
897	-76.896723	42.558232
898	-76.896732	42.557999
899	-76.896740	42.557779
900	-76.896749	42.557543
901	-76.896758	42.557322
902	-76.896769	42.557088
903	-76.896779	42.556868
904	-76.896788	42.556635
905	-76.896796	42.556417
906	-76.896802	42.556187
907	-76.896803	42.555972
908	-76.896806	42.555743
909	-76.896815	42.555528
910	-76.896831	42.555301
911	-76.896851	42.555088
912	-76.896875	42.554876
913	-76.896905	42.554652
914	-76.896939	42.554441
915	-76.896978	42.554218
916	-76.897014	42.554008
917	-76.897053	42.553784
918	-76.897090	42.553574
919	-76.897128	42.553349
920	-76.897165	42.553125
921	-76.897197	42.552915
922	-76.897225	42.552691
923	-76.897245	42.552467
924	-76.897257	42.552243
925	-76.897266	42.552032
926	-76.897272	42.551808
927	-76.897272	42.551584
928	-76.897269	42.551359
929	-76.897267	42.551134
930	-76.897271	42.550922
931	-76.897283	42.550697
932	-76.897299	42.550474
933	-76.897306	42.550252
934	-76.897305	42.550031
935	-76.897307	42.549809
936	-76.897318	42.549586
937	-76.897340	42.549365
938	-76.897369	42.549144
939	-76.897408	42.548923
940	-76.897444	42.548703
941	-76.897475	42.548482
942	-76.897498	42.548260

983	-76.639980	42.587090
984	-76.639880	42.586876
985	-76.639789	42.586648
986	-76.639717	42.586432
987	-76.639649	42.586205
988	-76.639588	42.585992
989	-76.639524	42.585766
990	-76.639450	42.585556
991	-76.639357	42.585347
992	-76.639270	42.585126
993	-76.639171	42.584929
994	-76.639084	42.584710
995	-76.638986	42.584488
996	-76.638898	42.584277
997	-76.638801	42.584066
998	-76.638720	42.583855
999	-76.638635	42.583633
1000	-76.638555	42.583422
1001	-76.638472	42.583212
1002	-76.638387	42.582990
1003	-76.638304	42.582778
1004	-76.638218	42.582553
1005	-76.638141	42.582338
1006	-76.638059	42.582111
1007	-76.637981	42.581895
1008	-76.637901	42.581669
1009	-76.637825	42.581457
1010	-76.637746	42.581245
1011	-76.637656	42.581024
1012	-76.637569	42.580816
1013	-76.637472	42.580600
1014	-76.637379	42.580395
1015	-76.637286	42.580191
1016	-76.637196	42.579973
1017	-76.637106	42.579768

943	-76.897509	42.548037
944	-76.897510	42.547817
945	-76.897496	42.547598
946	-76.897470	42.547379
947	-76.897452	42.547161
948	-76.897439	42.546943
949	-76.897426	42.546725
950	-76.897411	42.546506
951	-76.897399	42.546286
952	-76.897393	42.546053
953	-76.897393	42.545832
954	-76.897393	42.545613
955	-76.897388	42.545394
956	-76.897388	42.545163
957	-76.897394	42.544944
958	-76.897405	42.544726
959	-76.897419	42.544507
960	-76.897433	42.544275
961	-76.897447	42.544056
962	-76.897460	42.543836
963	-76.897476	42.543604
964	-76.897495	42.543385
965	-76.897513	42.543167
966	-76.897534	42.542936
967	-76.897556	42.542717
968	-76.897575	42.542486
969	-76.897587	42.542266
970	-76.897592	42.542045
971	-76.897589	42.541810
972	-76.897582	42.541588
973	-76.897566	42.541367
974	-76.897556	42.541131
975	-76.897567	42.540909
976	-76.897591	42.540676
977	-76.897620	42.540455
978	-76.897649	42.540234
979	-76.897681	42.540000
980	-76.897713	42.539779
981	-76.897747	42.539558
982	-76.897782	42.539325
983	-76.897813	42.539106
984	-76.897841	42.538886
985	-76.897864	42.538654
986	-76.897877	42.538434
987	-76.897883	42.538215
988	-76.897884	42.537994
989	-76.897882	42.537759
990	-76.897874	42.537537
991	-76.897870	42.537314
992	-76.897871	42.537090
993	-76.897877	42.536853
994	-76.897890	42.536628
995	-76.897915	42.536405
996	-76.897955	42.536170
997	-76.898006	42.535950
998	-76.898069	42.535733
999	-76.898129	42.535516
1000	-76.898189	42.535286
1001	-76.898243	42.535068

1002	-76.898292	42.534849
1003	-76.898334	42.534628
1004	-76.898369	42.534407
1005	-76.898399	42.534184
1006	-76.898426	42.533948
1007	-76.898448	42.533725
1008	-76.898465	42.533500
1009	-76.898474	42.533276
1010	-76.898480	42.533052
1011	-76.898483	42.532827
1012	-76.898484	42.532589
1013	-76.898480	42.532365
1014	-76.898470	42.532140
1015	-76.898460	42.531916
1016	-76.898453	42.531691
1017	-76.898451	42.531464
1018	-76.898458	42.531237
1019	-76.898473	42.530998
1020	-76.898482	42.530772
1021	-76.898482	42.530545
1022	-76.898474	42.530317
1023	-76.898461	42.530088
1024	-76.898457	42.529856
1025	-76.898483	42.529623
1026	-76.898524	42.529394
1027	-76.898575	42.529169
1028	-76.898623	42.528945
1029	-76.898658	42.528720
1030	-76.898689	42.528495
1031	-76.898712	42.528282
1032	-76.898726	42.528054
1033	-76.898731	42.527825
1034	-76.898730	42.527594
1035	-76.898722	42.527363
1036	-76.898710	42.527145
1037	-76.898708	42.526913
1038	-76.898716	42.526682
1039	-76.898720	42.526452
1040	-76.898718	42.526221
1041	-76.898711	42.526003
1042	-76.898699	42.525771
1043	-76.898684	42.525538
1044	-76.898673	42.525318
1045	-76.898675	42.525084
1046	-76.898692	42.524851
1047	-76.898718	42.524632
1048	-76.898758	42.524400
1049	-76.898809	42.524168
1050	-76.898863	42.523951
1051	-76.898923	42.523721
1052	-76.898978	42.523506
1053	-76.899026	42.523276
1054	-76.899062	42.523059
1055	-76.899088	42.522828
1056	-76.899095	42.522615
1057	-76.899087	42.522382
1058	-76.899065	42.522163
1059	-76.899033	42.521930
1060	-76.899008	42.521710

1061	-76.898999	42.521490
1062	-76.899000	42.521256
1063	-76.899002	42.521037
1064	-76.899002	42.520803
1065	-76.899003	42.520582
1066	-76.899007	42.520347
1067	-76.899010	42.520126
1068	-76.899012	42.519892
1069	-76.899014	42.519672
1070	-76.899017	42.519451
1071	-76.899024	42.519217
1072	-76.899035	42.518997
1073	-76.899049	42.518763
1074	-76.899057	42.518542
1075	-76.899058	42.518323
1076	-76.899053	42.518090
1077	-76.899044	42.517870
1078	-76.899029	42.517651
1079	-76.899008	42.517418
1080	-76.898983	42.517198
1081	-76.898959	42.516979

Appendix C

Seismic Reflection Tracklines – Seneca and Cayuga Lakes

