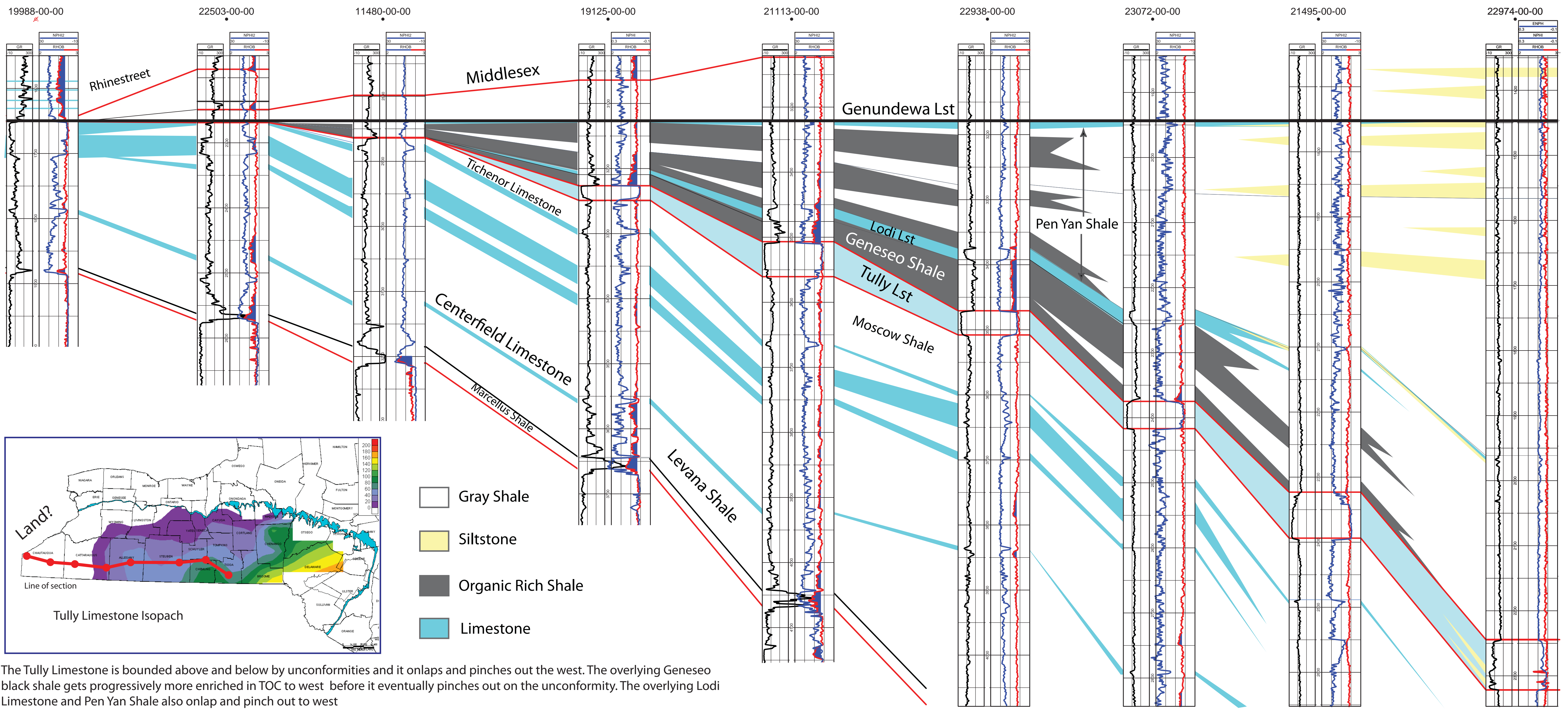
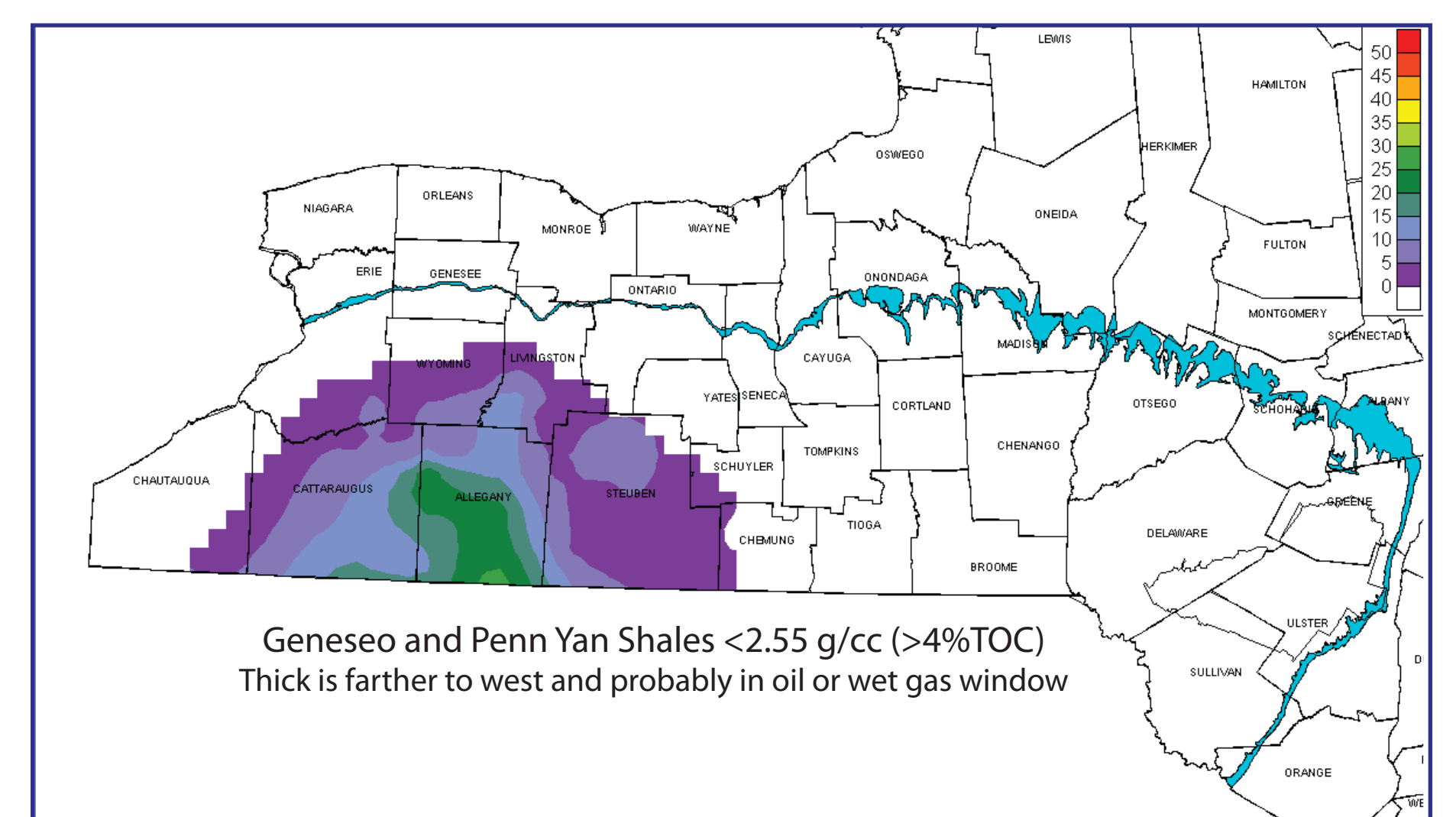
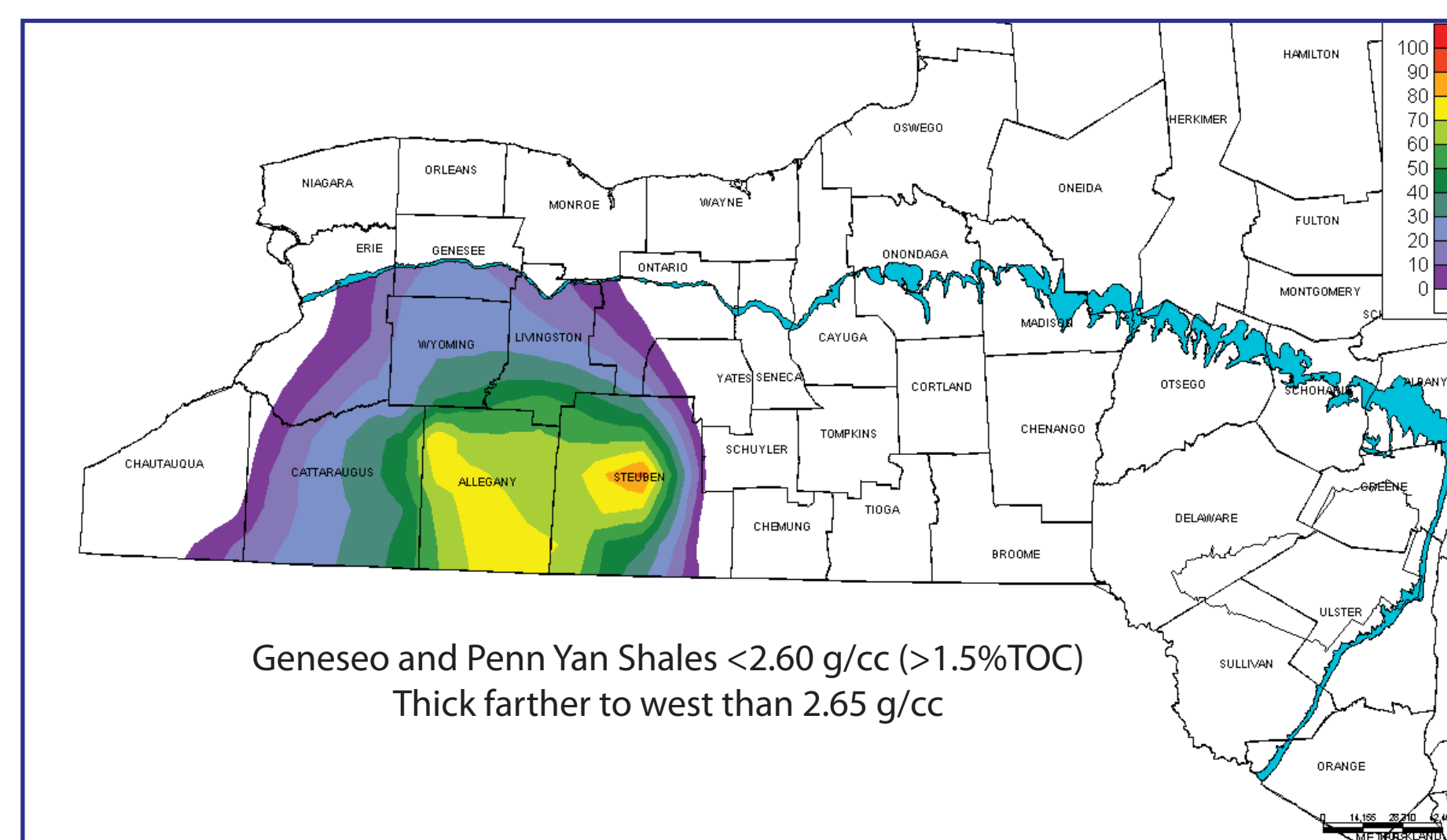
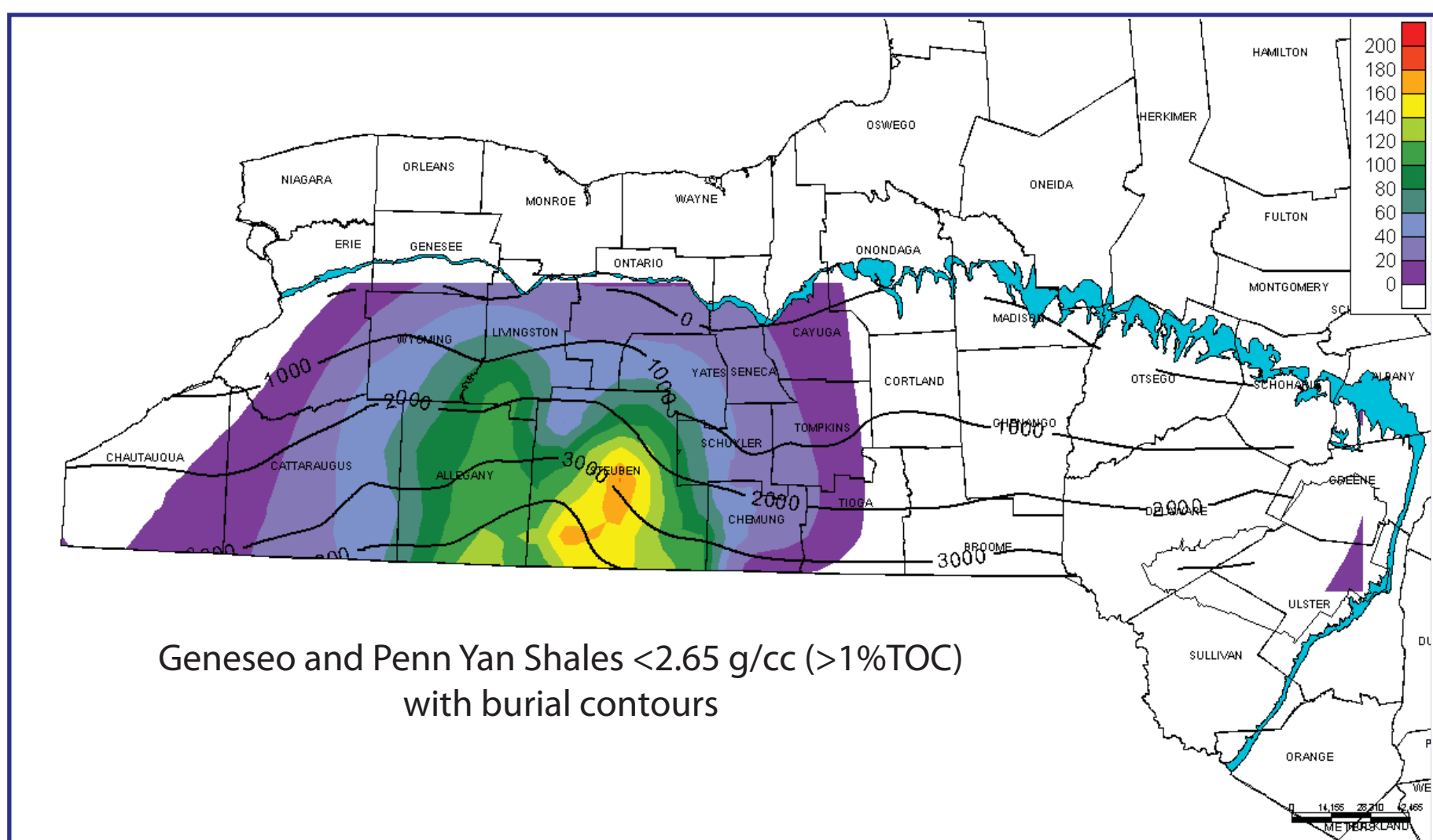


Tully, Genesee and Penn Yan

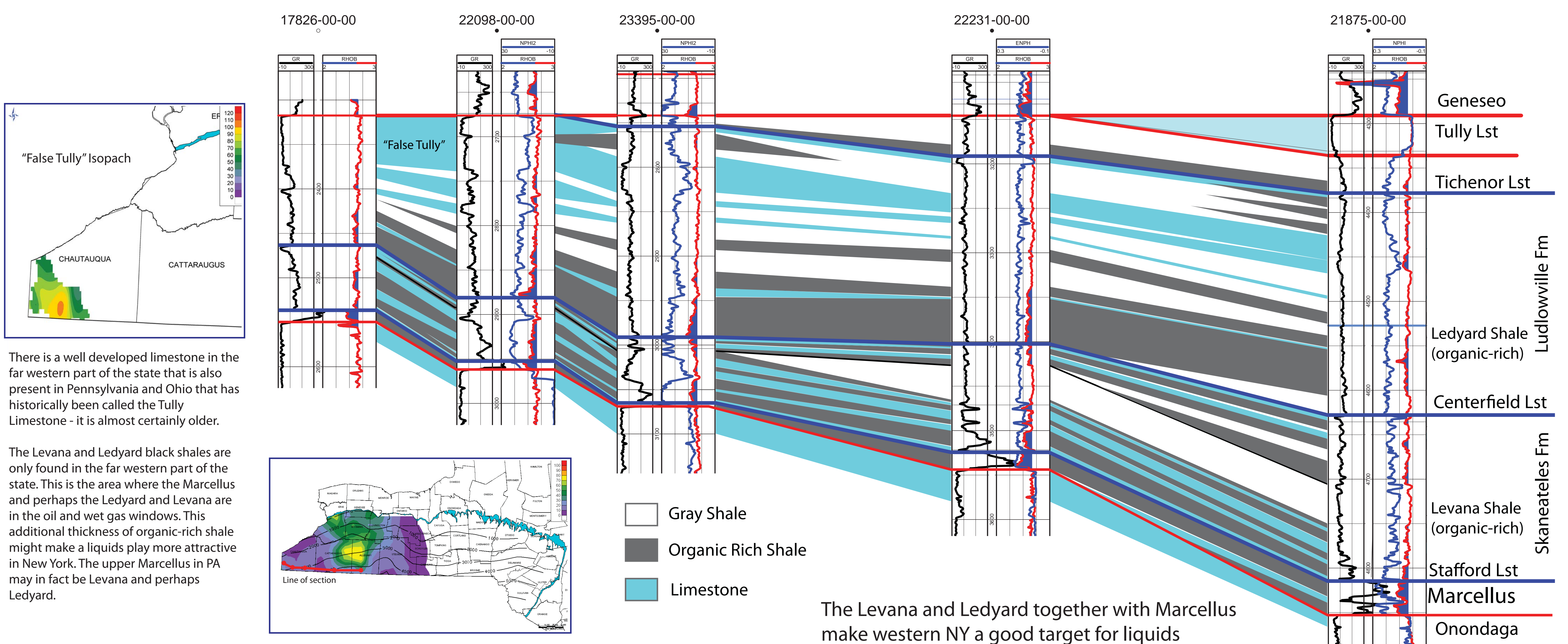


The Tully Limestone is bounded above and below by unconformities and it onlaps and pinches out the west. The overlying Genesee black shale gets progressively more enriched in TOC to west before it eventually pinches out on the unconformity. The overlying Lodi Limestone and Pen Yan Shale also onlap and pinch out to west

Genesee and Penn Yan Density Thickness Maps



Ledyard and Levana Black Shales (Upper Hamilton Group)



There is a well developed limestone in the far western part of the state that is also present in Pennsylvania and Ohio that has historically been called the Tully Limestone - it is almost certainly older.

The Levana and Ledyard black shales are only found in the far western part of the state. This is the area where the Marcellus and perhaps the Ledyard and Levana are in the oil and wet gas windows. This additional thickness of organic-rich shale might make a liquids play more attractive in New York. The upper Marcellus in PA may in fact be Levana and perhaps Ledyard.

The Levana and Ledyard together with Marcellus make western NY a good target for liquids

